

## ARG40841 anti-Maspin antibody

Package: 50 µg  
Store at: -20°C

### Summary

Product Description	Rabbit Polyclonal antibody recognizes Maspin
Tested Reactivity	Hu, Ms, Rat
Tested Application	ICC, IHC-P, WB
Host	Rabbit
Clonality	Polyclonal
Isotype	IgG
Target Name	Maspin
Species	Human
Immunogen	Recombinant protein corresponding to M1-A350 of Human Maspin.
Conjugation	Un-conjugated
Alternate Names	PI-5; PI5; Maspin; Serpin B5; maspin; Peptidase inhibitor 5

### Application Instructions

Application table	Application	Dilution
	ICC	1:200 - 1:1000
	IHC-P	1:200 - 1:1000
	WB	1:500 - 1:2000
Application Note	* The dilutions indicate recommended starting dilutions and the optimal dilutions or concentrations should be determined by the scientist.	

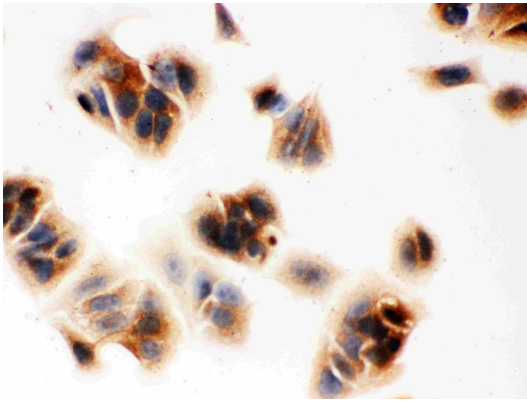
### Properties

Form	Liquid
Purification	Affinity purification with immunogen.
Buffer	0.2% Na <sub>2</sub> HPO <sub>4</sub> , 0.9% NaCl, 0.05% Sodium azide and 5% BSA.
Preservative	0.05% Sodium azide
Stabilizer	5% BSA
Concentration	0.5 mg/ml
Storage instruction	For continuous use, store undiluted antibody at 2-8°C for up to a week. For long-term storage, aliquot and store at -20°C or below. Storage in frost free freezers is not recommended. Avoid repeated freeze/thaw cycles. Suggest spin the vial prior to opening. The antibody solution should be gently mixed before use.
Note	For laboratory research only, not for drug, diagnostic or other use.

## Bioinformation

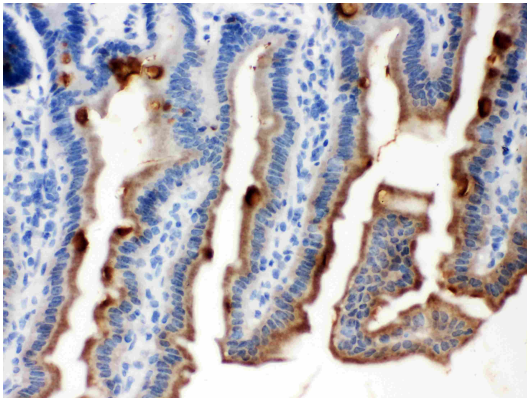
Gene Symbol	SERPINB5
Gene Full Name	serpin peptidase inhibitor, clade B (ovalbumin), member 5
Function	Tumor suppressor. It blocks the growth, invasion, and metastatic properties of mammary tumors. As it does not undergo the S (stressed) to R (relaxed) conformational transition characteristic of active serpins, it exhibits no serine protease inhibitory activity. [UniProt]
Calculated Mw	42 kDa
Cellular Localization	Secreted, extracellular space. [UniProt]

## Images



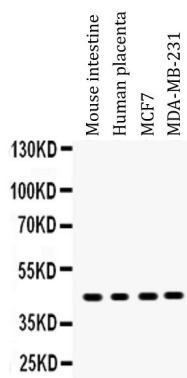
ARG40841 anti-Maspin antibody ICC image

Immunocytochemistry: MCF7 cells stained with ARG40841 anti-Maspin antibody.



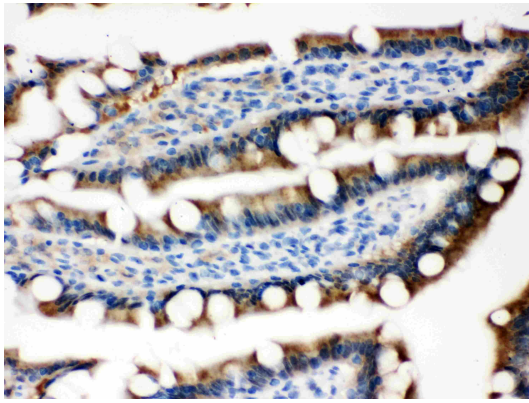
ARG40841 anti-Maspin antibody IHC-P image

Immunohistochemistry: Paraffin-embedded mouse intestine tissue stained with ARG40841 anti-Maspin antibody.



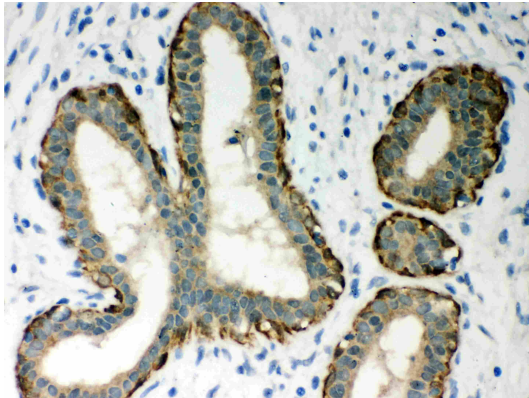
ARG40841 anti-Maspin antibody WB image

Western blot: 50  $\mu$ g of Mouse intestine, 50  $\mu$ g of Human placenta, 40  $\mu$ g of MCF7 and 40  $\mu$ g of MDA-MB-231 cell lysates stained with ARG40841 anti-Maspin antibody at 0.5  $\mu$ g/ml dilution.



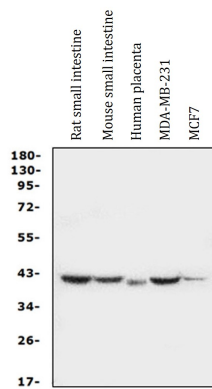
ARG40841 anti-Maspin antibody IHC-P image

Immunohistochemistry: Paraffin-embedded Rat intestine tissue stained with ARG40841 anti-Maspin antibody.



ARG40841 anti-Maspin antibody IHC-P image

Immunohistochemistry: Paraffin-embedded Human mammary cancer tissue stained with ARG40841 anti-Maspin antibody.



ARG40841 anti-Maspin antibody WB image

Western blot: 50  $\mu$ g of samples under reducing conditions. Rat small intestine, Mouse small intestine, Human placenta, MDA-MB-231 and MCF7 whole cell lysates stained with ARG40841 anti-Maspin antibody at 0.5  $\mu$ g/ml, overnight at 4°C.