

## ARG40822 anti-REG3A antibody

Package: 100 µl  
Store at: -20°C

### Summary

Product Description	Rabbit Polyclonal antibody recognizes REG3A
Tested Reactivity	Hu, Ms, Rat
Tested Application	IHC-P, WB
Specificity	This antibody might also react to REG3G based on sequence analysis.
Host	Rabbit
Clonality	Polyclonal
Isotype	IgG
Target Name	REG3A
Species	Human
Immunogen	Recombinant fusion protein corresponding to aa. 27-175 of Human REG3A (NP_002571.1).
Conjugation	Un-conjugated
Alternate Names	HIP; PAP; HIP/PAP; Regenerating islet-derived protein 3-alpha; PAP-H; REG-III; Hepatointestinal pancreatic protein; PBCGF; Human proislet peptide; REG3; INGAP; Regenerating islet-derived protein III-alpha; REG-3-alpha; Reg III-alpha; PAP1; Pancreatitis-associated protein 1

### Application Instructions

Application table	Application	Dilution
	IHC-P	1:50 - 1:200
	WB	1:500 - 1:2000
Application Note	* The dilutions indicate recommended starting dilutions and the optimal dilutions or concentrations should be determined by the scientist.	
Positive Control	Mouse pancreas	
Observed Size	14.5 kDa	

### Properties

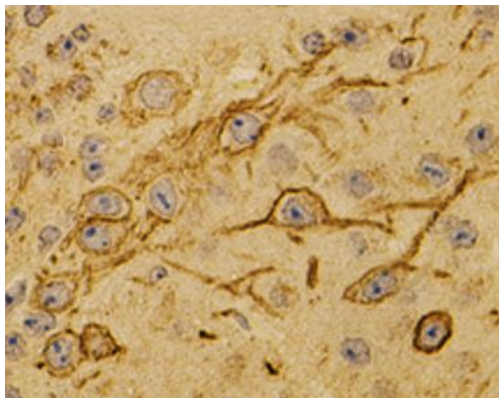
Form	Liquid
Purification	Affinity purified.
Buffer	PBS (pH 7.3), 0.02% Sodium azide and 50% Glycerol.
Preservative	0.02% Sodium azide
Stabilizer	50% Glycerol
Storage instruction	For continuous use, store undiluted antibody at 2-8°C for up to a week. For long-term storage, aliquot and store at -20°C. Storage in frost free freezers is not recommended. Avoid repeated freeze/thaw cycles. Suggest spin the vial prior to opening. The antibody solution should be gently mixed before use.

Note For laboratory research only, not for drug, diagnostic or other use.

## Bioinformation

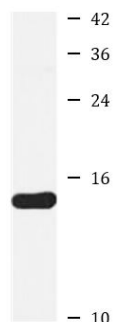
Gene Symbol	REG3A
Gene Full Name	regenerating islet-derived 3 alpha
Background	This gene encodes a pancreatic secretory protein that may be involved in cell proliferation or differentiation. It has similarity to the C-type lectin superfamily. The enhanced expression of this gene is observed during pancreatic inflammation and liver carcinogenesis. The mature protein also functions as an antimicrobial protein with antibacterial activity. Alternate splicing results in multiple transcript variants that encode the same protein.[provided by RefSeq, Nov 2014]
Function	Bactericidal C-type lectin which acts exclusively against Gram-positive bacteria and mediates bacterial killing by binding to surface-exposed carbohydrate moieties of peptidoglycan. Regulates keratinocyte proliferation and differentiation after skin injury via activation of EXTL3-PI3K-AKT signaling pathway. [UniProt]
Calculated Mw	19 kDa
PTM	Proteolytic processing by trypsin removes an inhibitory N-terminal propeptide and is essential for peptidoglycan binding and antibacterial activity. [UniProt]
Cellular Localization	Secreted. Note=Found in the apical region of pancreatic acinar cells. [UniProt]

## Images



ARG40822 anti-REG3A antibody IHC-P image

Immunohistochemistry: Paraffin-embedded Mouse brain stained with ARG40822 anti-REG3A antibody.



Mouse pancreas

ARG40822 anti-REG3A antibody WB image

Western blot: 25 µg of Mouse pancreas lysate stained with ARG40822 anti-REG3A antibody at 1:1000 dilution.