

## ARG40779 anti-TRPM3 antibody

Package: 50 µl  
Store at: -20°C

### Summary

Product Description	Rabbit Polyclonal antibody recognizes TRPM3
Tested Reactivity	Hu
Predict Reactivity	Ms, Rat, Cow, Dog, Gpig, Hrs, Rb, Zfsh
Tested Application	WB
Host	Rabbit
Clonality	Polyclonal
Isotype	IgG
Target Name	TRPM3
Species	Human
Immunogen	Synthetic peptide around the N-terminal region of Human TRPM3. (Within the following region: ALVACKLCKAMAHEASENDMVDDISQELNHNSRDFGQLAVELLDQSYKQD)
Conjugation	Un-conjugated
Alternate Names	Transient receptor potential cation channel subfamily M member 3; LTRpC3; GON-2; Melastatin-2; LTRPC3; MLSN2; LTRpC-3; Long transient receptor potential channel 3

### Application Instructions

Predict Reactivity Note	Predicted Homology Based On Immunogen Sequence: Cow: 100%; Dog: 100%; Guinea pig: 100%; Horse: 100%; Mouse: 100%; Rabbit: 100%; Rat: 100%; Zebrafish: 86%				
Application table	<table><thead><tr><th>Application</th><th>Dilution</th></tr></thead><tbody><tr><td>WB</td><td>1 - 2 µg/ml</td></tr></tbody></table>	Application	Dilution	WB	1 - 2 µg/ml
Application	Dilution				
WB	1 - 2 µg/ml				
Application Note	* The dilutions indicate recommended starting dilutions and the optimal dilutions or concentrations should be determined by the scientist.				
Positive Control	HepG2				

### Properties

Form	Liquid
Purification	Affinity purified.
Buffer	PBS, 0.09% (w/v) Sodium azide and 2% Sucrose.
Preservative	0.09% (w/v) Sodium azide
Stabilizer	2% Sucrose
Concentration	Batch dependent: 0.5 - 1 mg/ml
Storage instruction	For continuous use, store undiluted antibody at 2-8°C for up to a week. For long-term storage, aliquot and store at -20°C or below. Storage in frost free freezers is not recommended. Avoid repeated

freeze/thaw cycles. Suggest spin the vial prior to opening. The antibody solution should be gently mixed before use.

**Note**

For laboratory research only, not for drug, diagnostic or other use.

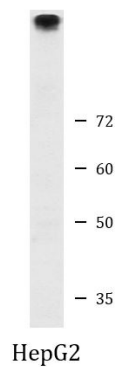
## Bioinformation

---

Gene Symbol	TRPM3
Gene Full Name	transient receptor potential cation channel, subfamily M, member 3
Background	The product of this gene belongs to the family of transient receptor potential (TRP) channels. TRP channels are cation-selective channels important for cellular calcium signaling and homeostasis. The protein encoded by this gene mediates calcium entry, and this entry is potentiated by calcium store depletion. Alternatively spliced transcript variants encoding different isoforms have been identified. [provided by RefSeq, Jul 2008]
Function	Calcium channel mediating constitutive calcium ion entry. Its activity is increased by reduction in extracellular osmolarity, by store depletion and muscarinic receptor activation. [UniProt]
Calculated Mw	198 kDa
Cellular Localization	Membrane; Multi-pass membrane protein. [UniProt]

## Images

---



ARG40779 anti-TRPM3 antibody WB image

Western blot: HepG2 cell lysate stained with ARG40779 anti-TRPM3 antibody at 1.25 µg/ml dilution.