

## ARG40772 anti-Twist 1 antibody

Package: 50 µl  
Store at: -20°C

### Summary

|                     |                                                                                                                                                     |
|---------------------|-----------------------------------------------------------------------------------------------------------------------------------------------------|
| Product Description | Rabbit Polyclonal antibody recognizes Twist 1                                                                                                       |
| Tested Reactivity   | Hu                                                                                                                                                  |
| Predict Reactivity  | Ms, Rat, Cow, Dog, Gpig, Hrs, Pig, Rb, Zfsh                                                                                                         |
| Tested Application  | IHC-P, WB                                                                                                                                           |
| Host                | Rabbit                                                                                                                                              |
| Clonality           | Polyclonal                                                                                                                                          |
| Isotype             | IgG                                                                                                                                                 |
| Target Name         | Twist 1                                                                                                                                             |
| Species             | Human                                                                                                                                               |
| Immunogen           | Synthetic peptide around the C-terminal region of Human Twist 1 (within the following region: DKLSKIQTLKLAARYIDFLYQVLQSDDELDSKMASCSYVAHERLSYAFSVW). |
| Conjugation         | Un-conjugated                                                                                                                                       |
| Alternate Names     | CRS; CSO; BPES3; BPES2; Class A basic helix-loop-helix protein 38; Twist-related protein 1; ACS3; TWIST; H-twist; CRS1; SCS; bHLHa38                |

### Application Instructions

| Predict Reactivity Note | Predicted Homology Based On Immunogen Sequence: Cow: 100%; Dog: 79%; Guinea pig: 79%; Horse: 100%; Mouse: 100%; Pig: 100%; Rabbit: 79%; Rat: 100%; Zebrafish: 100%               |             |          |       |                 |    |           |
|-------------------------|----------------------------------------------------------------------------------------------------------------------------------------------------------------------------------|-------------|----------|-------|-----------------|----|-----------|
| Application table       | <table><thead><tr><th>Application</th><th>Dilution</th></tr></thead><tbody><tr><td>IHC-P</td><td>Assay-dependent</td></tr><tr><td>WB</td><td>2.5 µg/ml</td></tr></tbody></table> | Application | Dilution | IHC-P | Assay-dependent | WB | 2.5 µg/ml |
| Application             | Dilution                                                                                                                                                                         |             |          |       |                 |    |           |
| IHC-P                   | Assay-dependent                                                                                                                                                                  |             |          |       |                 |    |           |
| WB                      | 2.5 µg/ml                                                                                                                                                                        |             |          |       |                 |    |           |
| Application Note        | * The dilutions indicate recommended starting dilutions and the optimal dilutions or concentrations should be determined by the scientist.                                       |             |          |       |                 |    |           |

### Properties

|                     |                                                                                                                                                                                                       |
|---------------------|-------------------------------------------------------------------------------------------------------------------------------------------------------------------------------------------------------|
| Form                | Liquid                                                                                                                                                                                                |
| Purification        | Purification with Protein A.                                                                                                                                                                          |
| Buffer              | PBS, 0.09% (w/v) Sodium azide and 2% Sucrose.                                                                                                                                                         |
| Preservative        | 0.09% (w/v) Sodium azide                                                                                                                                                                              |
| Stabilizer          | 2% Sucrose                                                                                                                                                                                            |
| Concentration       | Batch dependent: 0.5 - 1 mg/ml                                                                                                                                                                        |
| Storage instruction | For continuous use, store undiluted antibody at 2-8°C for up to a week. For long-term storage, aliquot and store at -20°C or below. Storage in frost free freezers is not recommended. Avoid repeated |

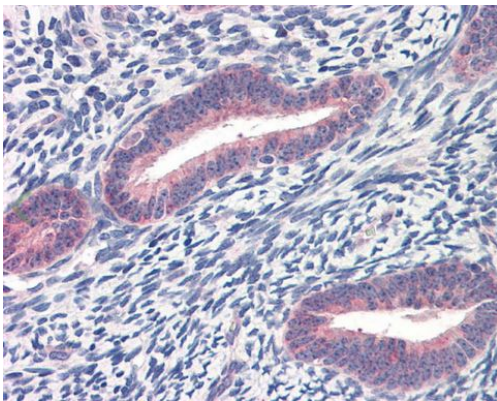
freeze/thaw cycles. Suggest spin the vial prior to opening. The antibody solution should be gently mixed before use.

**Note** For laboratory research only, not for drug, diagnostic or other use.

## Bioinformation

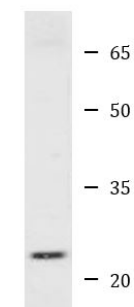
|                       |                                                                                                                                                                                                                                                                                                                                                                                                                                                                                                                                                                                                                                                                                                                                                                                                                                                                         |
|-----------------------|-------------------------------------------------------------------------------------------------------------------------------------------------------------------------------------------------------------------------------------------------------------------------------------------------------------------------------------------------------------------------------------------------------------------------------------------------------------------------------------------------------------------------------------------------------------------------------------------------------------------------------------------------------------------------------------------------------------------------------------------------------------------------------------------------------------------------------------------------------------------------|
| Gene Symbol           | TWIST1                                                                                                                                                                                                                                                                                                                                                                                                                                                                                                                                                                                                                                                                                                                                                                                                                                                                  |
| Gene Full Name        | twist family bHLH transcription factor 1                                                                                                                                                                                                                                                                                                                                                                                                                                                                                                                                                                                                                                                                                                                                                                                                                                |
| Background            | Basic helix-loop-helix (bHLH) transcription factors have been implicated in cell lineage determination and differentiation. The protein encoded by this gene is a bHLH transcription factor and shares similarity with another bHLH transcription factor, Dermo1. The strongest expression of this mRNA is in placental tissue; in adults, mesodermally derived tissues express this mRNA preferentially. Mutations in this gene have been found in patients with Saethre-Chotzen syndrome. [provided by RefSeq, Jul 2008]                                                                                                                                                                                                                                                                                                                                              |
| Function              | Acts as a transcriptional regulator. Inhibits myogenesis by sequestering E proteins, inhibiting trans-activation by MEF2, and inhibiting DNA-binding by MYOD1 through physical interaction. This interaction probably involves the basic domains of both proteins. Also represses expression of proinflammatory cytokines such as TNFA and IL1B. Regulates cranial suture patterning and fusion. Activates transcription as a heterodimer with E proteins. Regulates gene expression differentially, depending on dimer composition. Homodimers induce expression of FGFR2 and POSTN while heterodimers repress FGFR2 and POSTN expression and induce THBS1 expression. Heterodimerization is also required for osteoblast differentiation. Represses the activity of the circadian transcriptional activator: NPAS2-ARNTL/BMAL1 heterodimer (By similarity). [UniProt] |
| Calculated Mw         | 21 kDa                                                                                                                                                                                                                                                                                                                                                                                                                                                                                                                                                                                                                                                                                                                                                                                                                                                                  |
| Cellular Localization | Nucleus. [UniProt]                                                                                                                                                                                                                                                                                                                                                                                                                                                                                                                                                                                                                                                                                                                                                                                                                                                      |

## Images



ARG40772 anti-Twist 1 antibody IHC-P image

Immunohistochemistry: Paraffin-embedded Human uterus tissue stained with ARG40772 anti-Twist 1 antibody.



Jurkat

ARG40772 anti-Twist 1 antibody WB image

Western blot: 25 µg of Jurkat cell lysate stained with ARG40772 anti-Twist 1 antibody at 2.5 µg/ml dilution.