

## ARG40754 anti-TLR2 antibody

Package: 100 µl  
Store at: -20°C

### Summary

Product Description	Rabbit Polyclonal antibody recognizes TLR2
Tested Reactivity	Hu, Ms, Rat
Tested Application	ICC/IF, IHC-P
Host	Rabbit
Clonality	Polyclonal
Isotype	IgG
Target Name	TLR2
Species	Human
Immunogen	Synthetic peptide of Human TLR2.
Conjugation	Un-conjugated
Alternate Names	CD antigen CD282; TIL4; CD282; Toll/interleukin-1 receptor-like protein 4; Toll-like receptor 2

### Application Instructions

Application table	Application	Dilution
	ICC/IF	1:50 - 1:100
	IHC-P	1:50 - 1:100
Application Note	* The dilutions indicate recommended starting dilutions and the optimal dilutions or concentrations should be determined by the scientist.	

### Properties

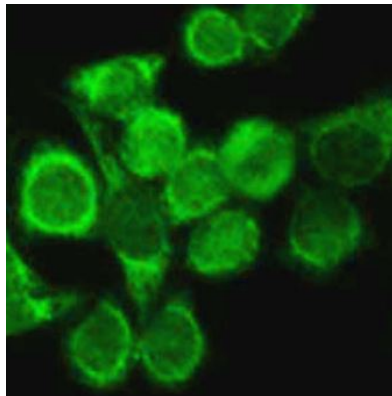
Form	Liquid
Purification	Affinity purified.
Buffer	PBS (pH 7.3), 0.02% Sodium azide and 50% Glycerol.
Preservative	0.02% Sodium azide
Stabilizer	50% Glycerol
Storage instruction	For continuous use, store undiluted antibody at 2-8°C for up to a week. For long-term storage, aliquot and store at -20°C. Storage in frost free freezers is not recommended. Avoid repeated freeze/thaw cycles. Suggest spin the vial prior to opening. The antibody solution should be gently mixed before use.
Note	For laboratory research only, not for drug, diagnostic or other use.

### Bioinformation

Gene Symbol	TLR2
Gene Full Name	toll-like receptor 2
Background	The protein encoded by this gene is a member of the Toll-like receptor (TLR) family which plays a fundamental role in pathogen recognition and activation of innate immunity. TLRs are highly conserved from <i>Drosophila</i> to humans and share structural and functional similarities. They recognize pathogen-associated molecular patterns (PAMPs) that are expressed on infectious agents, and mediate the production of cytokines necessary for the development of effective immunity. The various TLRs exhibit different patterns of expression. This gene is expressed most abundantly in peripheral blood leukocytes, and mediates host response to Gram-positive bacteria and yeast via stimulation of NF-kappaB. [provided by RefSeq, Jul 2008]
Function	Cooperates with LY96 to mediate the innate immune response to bacterial lipoproteins and other microbial cell wall components. Cooperates with TLR1 or TLR6 to mediate the innate immune response to bacterial lipoproteins or lipopeptides. Acts via MYD88 and TRAF6, leading to NF-kappa-B activation, cytokine secretion and the inflammatory response. May also promote apoptosis in response to lipoproteins. Recognizes mycoplasmal macrophage-activating lipopeptide-2kD (MALP-2), soluble tuberculosis factor (STF), phenol-soluble modulins (PSM) and <i>B.burgdorferi</i> outer surface protein A lipoprotein (OspA-L) cooperatively with TLR6. [UniProt]
Calculated Mw	90 kDa
PTM	Glycosylation of Asn-442 is critical for secretion of the N-terminal ectodomain of TLR2. [UniProt]
Cellular Localization	Membrane; Single-pass type I membrane protein. Cytoplasmic vesicle, phagosome membrane; Single-pass type I membrane protein. Membrane raft. [UniProt]

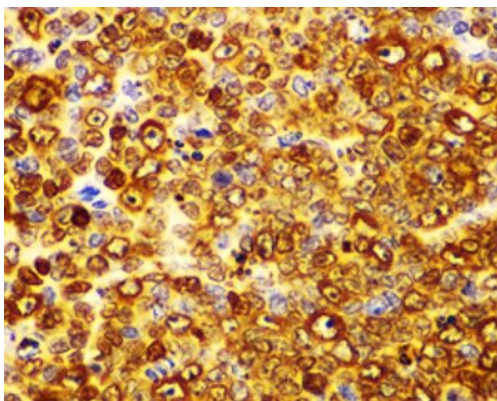
## Images

---



ARG40754 anti-TLR2 antibody ICC/IF image

Immunofluorescence: HeLa cells stained with ARG40754 anti-TLR2 antibody at 1:100 dilution.



ARG40754 anti-TLR2 antibody IHC-P image

Immunohistochemistry: Paraffin-embedded Rat spleen stained with ARG40754 anti-TLR2 antibody at 1:100 dilution.