

ARG40720 anti-OAT3 / SLC22A8 antibody

Package: 50 µl
Store at: -20°C

Summary

Product Description	Rabbit Polyclonal antibody recognizes OAT3 / SLC22A8
Tested Reactivity	Hu
Predict Reactivity	Ms, Cow, Dog, Rb
Tested Application	WB
Host	Rabbit
Clonality	Polyclonal
Isotype	IgG
Target Name	OAT3 / SLC22A8
Species	Human
Immunogen	Synthetic peptide around the middle region of Human OAT3 / SLC22A8. (within the following region: PETLNQPLPETIEDLENWSLRAKKPKQEPEVEKASQRIPLQPHGPGGLGSS)
Conjugation	Un-conjugated
Alternate Names	Organic anion transporter 3; Solute carrier family 22 member 8; hOAT3; OAT3

Application Instructions

Predict Reactivity Note	Predicted Homology Based On Immunogen Sequence: Cow: 79%; Dog: 79%; Mouse: 86%; Rabbit: 86%				
Application table	<table><thead><tr><th>Application</th><th>Dilution</th></tr></thead><tbody><tr><td>WB</td><td>0.2 - 1 µg/ml</td></tr></tbody></table>	Application	Dilution	WB	0.2 - 1 µg/ml
Application	Dilution				
WB	0.2 - 1 µg/ml				
Application Note	* The dilutions indicate recommended starting dilutions and the optimal dilutions or concentrations should be determined by the scientist.				
Positive Control	Human heart				
Observed Size	65 kDa				

Properties

Form	Liquid
Purification	Affinity purified.
Buffer	PBS, 0.09% (w/v) Sodium azide and 2% Sucrose.
Preservative	0.09% (w/v) Sodium azide
Stabilizer	2% Sucrose
Concentration	Batch dependent: 0.5 - 1 mg/ml
Storage instruction	For continuous use, store undiluted antibody at 2-8°C for up to a week. For long-term storage, aliquot and store at -20°C or below. Storage in frost free freezers is not recommended. Avoid repeated

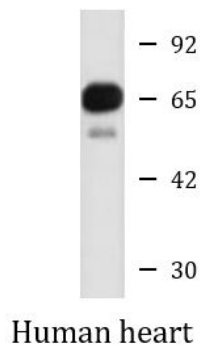
freeze/thaw cycles. Suggest spin the vial prior to opening. The antibody solution should be gently mixed before use.

Note For laboratory research only, not for drug, diagnostic or other use.

Bioinformation

Gene Symbol	SLC22A8
Gene Full Name	solute carrier family 22 (organic anion transporter), member 8
Background	This gene encodes a protein involved in the sodium-independent transport and excretion of organic anions, some of which are potentially toxic. The encoded protein is an integral membrane protein and appears to be localized to the basolateral membrane of the kidney. Multiple alternatively spliced transcript variants that encode different protein isoforms have been described for this gene. [provided by RefSeq, May 2010]
Function	Plays an important role in the excretion/detoxification of endogenous and exogenous organic anions, especially from the brain and kidney. Involved in the transport basolateral of steviol, fexofenadine. Transports benzylpenicillin (PCG), estrone-3-sulfate (E1S), cimetidine (CMD), 2,4-dichloro-phenoxyacetate (2,4-D), p-amino-hippurate (PAH), acyclovir (ACV) and ochratoxin (OTA). [UniProt]
Calculated Mw	60 kDa
Cellular Localization	Basolateral cell membrane; Multi-pass membrane protein. Note=Localizes on the brush border membrane of the choroid epithelial cells. Localizes to the basolateral membrane of the proximal tubular cells. Localizes on the abluminal and possibly, luminal membrane of the brain capillary endothelial cells (BCEC) (By similarity). [UniProt]

Images



ARG40720 anti-SLC22A8 antibody WB image

Western blot: Human heart lysate stained with ARG40720 anti-SLC22A8 antibody at 0.2 - 1 µg/ml dilution.