

ARG40701 anti-RPL19 antibody

Package: 50 µg
Store at: -20°C

Summary

Product Description	Rabbit Polyclonal antibody recognizes RPL19
Tested Reactivity	Hu, Ms, Rat
Predict Reactivity	Bov, Chk, Dog, Mk, Rb
Tested Application	FACS, ICC/IF, WB
Host	Rabbit
Clonality	Polyclonal
Isotype	IgG
Target Name	RPL19
Species	Human
Immunogen	Synthetic peptide corresponding to aa. 132-170 of Human RPL19. (FKNKRILMEHIHKLKADKARKKLLADQAEARRSKTKEAR)
Conjugation	Un-conjugated
Alternate Names	60S ribosomal protein L19; L19

Application Instructions

Application table	Application	Dilution
	FACS	1 - 3 µg/10 ⁶ cells
	ICC/IF	1:200 - 1:1000
	WB	1:500 - 1:2000

Application Note * The dilutions indicate recommended starting dilutions and the optimal dilutions or concentrations should be determined by the scientist.

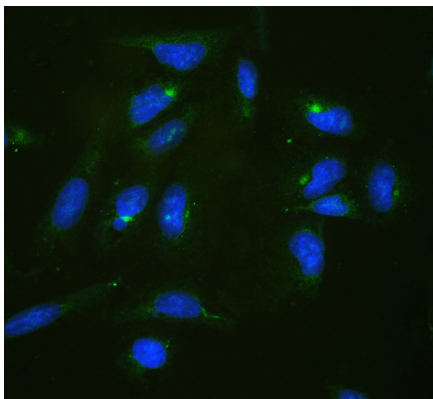
Properties

Form	Liquid
Purification	Affinity purification with immunogen.
Buffer	0.2% Na ₂ HPO ₄ , 0.9% NaCl, 0.05% Sodium azide and 5% BSA.
Preservative	0.05% Sodium azide
Stabilizer	5% BSA
Concentration	0.5 mg/ml
Storage instruction	For continuous use, store undiluted antibody at 2-8°C for up to a week. For long-term storage, aliquot and store at -20°C or below. Storage in frost free freezers is not recommended. Avoid repeated freeze/thaw cycles. Suggest spin the vial prior to opening. The antibody solution should be gently mixed before use.

Bioinformation

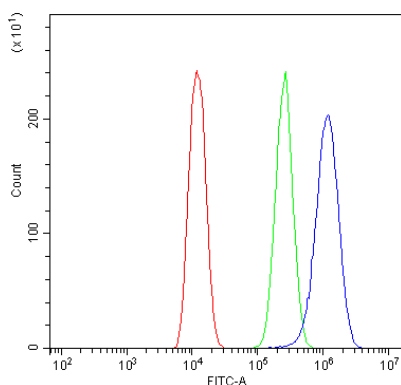
Gene Symbol	RPL19
Gene Full Name	ribosomal protein L19
Background	Ribosomes, the organelles that catalyze protein synthesis, consist of a small 40S subunit and a large 60S subunit. Together these subunits are composed of 4 RNA species and approximately 80 structurally distinct proteins. This gene encodes a ribosomal protein that is a component of the 60S subunit. The protein belongs to the L19E family of ribosomal proteins. It is located in the cytoplasm. As is typical for genes encoding ribosomal proteins, there are multiple processed pseudogenes of this gene dispersed through the genome. [provided by RefSeq, Jul 2008]
Calculated Mw	23 kDa
PTM	Citrullinated by PADI4. [UniProt]

Images



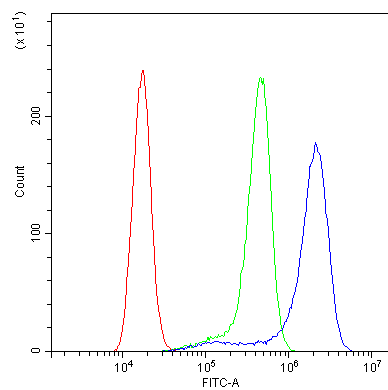
ARG40701 anti-RPL19 antibody ICC/IF image

Immunofluorescence: U2OS cells stained with ARG40701 anti-RPL19 antibody at 2 µg/ml, overnight at 4°C. Cells were counterstained with DAPI (blue).



ARG40701 anti-RPL19 antibody FACS image

Flow Cytometry: U2OS cells were blocked with 10% normal goat serum and stained with ARG40701 anti-RPL19 antibody (blue) at 1 µg/10⁶ cells for 30 min at 20°C, followed by incubation with DyLight[®]488 labelled secondary antibody. Isotype control antibody (green) was rabbit IgG (1 µg/10⁶ cells) used under the same conditions. Unlabelled sample (red) was also used as a control.



ARG40701 anti-RPL19 antibody FACS image

Flow Cytometry: A431 cells were blocked with 10% normal goat serum and stained with ARG40701 anti-RPL19 antibody (blue) at 1 $\mu\text{g}/10^6$ cells for 30 min at 20°C, followed by incubation with DyLight®488 labelled secondary antibody. Isotype control antibody (green) was rabbit IgG (1 $\mu\text{g}/10^6$ cells) used under the same conditions. Unlabelled sample (red) was also used as a control.



ARG40701 anti-RPL19 antibody WB image

Western blot: Rat liver, HEPA and HepG2 whole cell lysates stained with ARG40701 anti-RPL19 antibody at 0.5 $\mu\text{g}/\text{ml}$.