

ARG40697 anti-GABAA Receptor alpha 1 antibody

Package: 50 µg
Store at: -20°C

Summary

Product Description	Rabbit Polyclonal antibody recognizes GABAA Receptor alpha 1
Tested Reactivity	Hu, Rat
Predict Reactivity	Hm
Tested Application	IHC-P, WB
Host	Rabbit
Clonality	Polyclonal
Isotype	IgG
Target Name	GABAA Receptor alpha 1
Species	Human
Immunogen	Synthetic peptide corresponding to aa. 440-456 of Human GABAA Receptor alpha 1. (ATYLNREPQLKAPTPHQ)
Conjugation	Un-conjugated
Alternate Names	A; EJM; EIEE19; EJM5; Gamma-aminobutyric acid receptor subunit alpha-1; ECA4; GABA

Application Instructions

Application table	Application	Dilution
	IHC-P	1:200 - 1:1000
	WB	1:500 - 1:2000

Application Note * The dilutions indicate recommended starting dilutions and the optimal dilutions or concentrations should be determined by the scientist.

Properties

Form	Liquid
Purification	Affinity purification with immunogen.
Buffer	0.2% Na ₂ HPO ₄ , 0.9% NaCl, 0.05% Thimerosal, 0.05% Sodium azide and 5% BSA.
Preservative	0.05% Thimerosal and 0.05% Sodium azide
Stabilizer	5% BSA
Concentration	0.5 mg/ml
Storage instruction	For continuous use, store undiluted antibody at 2-8°C for up to a week. For long-term storage, aliquot and store at -20°C or below. Storage in frost free freezers is not recommended. Avoid repeated freeze/thaw cycles. Suggest spin the vial prior to opening. The antibody solution should be gently mixed before use.

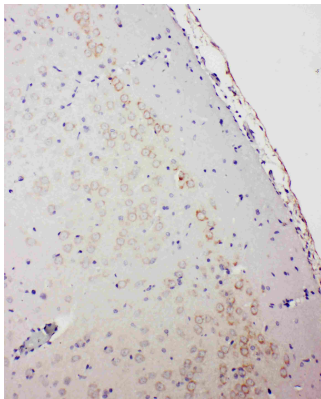
Note

For laboratory research only, not for drug, diagnostic or other use.

Bioinformation

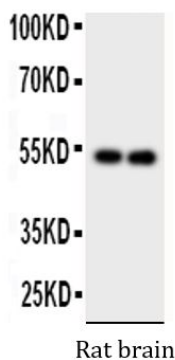
Gene Symbol	GABRA1
Gene Full Name	gamma-aminobutyric acid (GABA) A receptor, alpha 1
Background	This gene encodes a gamma-aminobutyric acid (GABA) receptor. GABA is the major inhibitory neurotransmitter in the mammalian brain where it acts at GABA-A receptors, which are ligand-gated chloride channels. Chloride conductance of these channels can be modulated by agents such as benzodiazepines that bind to the GABA-A receptor. GABA-A receptors are pentameric, consisting of proteins from several subunit classes: alpha, beta, gamma, delta and rho. Mutations in this gene cause juvenile myoclonic epilepsy and childhood absence epilepsy type 4. Multiple transcript variants encoding the same protein have been identified for this gene. [provided by RefSeq, Jul 2008]
Function	Component of the heteropentameric receptor for GABA, the major inhibitory neurotransmitter in the vertebrate brain. Functions also as histamine receptor and mediates cellular responses to histamine. Functions as receptor for diazepam and various anesthetics, such as pentobarbital; these are bound at a separate allosteric effector binding site. Functions as ligand-gated chloride channel (By similarity). [UniProt]
Calculated Mw	52 kDa
Cellular Localization	Cell junction, synapse, postsynaptic cell membrane; Multi-pass membrane protein. Cell membrane; Multi-pass membrane protein. Cytoplasmic vesicle membrane. [UniProt]

Images



ARG40697 anti-GABAA Receptor alpha 1 antibody IHC-P image

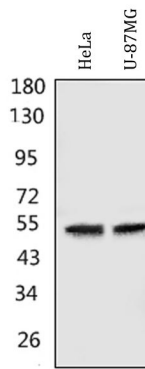
Immunohistochemistry: Paraffin-embedded Rat brain tissue stained with ARG40697 anti-GABAA Receptor alpha 1 antibody.



ARG40697 anti-GABAA Receptor alpha 1 antibody WB image

Western blot: Rat brain lysates (both lanes) stained with ARG40697 anti-GABAA Receptor alpha 1 antibody.

ARG40697 anti-GABAA Receptor alpha 1 antibody WB image



Western blot: 50 µg of sample under reducing conditions. HeLa and U-87MG whole cell lysates stained with ARG40697 anti-GABAA Receptor alpha 1 antibody at 0.5 µg/ml dilution, overnight at 4°C.