

## ARG40598 anti-Norepinephrine Transporter antibody

Package: 100 µl  
Store at: -20°C

### Summary

Product Description	Rabbit Polyclonal antibody recognizes Norepinephrine Transporter
Tested Reactivity	Hu, Ms, Rat
Tested Application	WB
Host	Rabbit
Clonality	Polyclonal
Isotype	IgG
Target Name	Norepinephrine Transporter
Species	Human
Immunogen	Recombinant fusion protein corresponding to aa. 1-70 of Human Norepinephrine Transporter (NP_001165975.1).
Conjugation	Un-conjugated
Alternate Names	SLC6A5; Solute carrier family 6 member 2; NAT1; Norepinephrine transporter; NET; Sodium-dependent noradrenaline transporter; NET1

### Application Instructions

Predict Reactivity Note	Rat				
Application table	<table><thead><tr><th>Application</th><th>Dilution</th></tr></thead><tbody><tr><td>WB</td><td>1:500 - 1:2000</td></tr></tbody></table>	Application	Dilution	WB	1:500 - 1:2000
Application	Dilution				
WB	1:500 - 1:2000				
Application Note	* The dilutions indicate recommended starting dilutions and the optimal dilutions or concentrations should be determined by the scientist.				
Positive Control	Mouse spinal cord				
Observed Size	68 kDa				

### Properties

Form	Liquid
Purification	Affinity purified.
Buffer	PBS (pH 7.3), 0.02% Sodium azide and 50% Glycerol.
Preservative	0.02% Sodium azide
Stabilizer	50% Glycerol
Storage instruction	For continuous use, store undiluted antibody at 2-8°C for up to a week. For long-term storage, aliquot and store at -20°C. Storage in frost free freezers is not recommended. Avoid repeated freeze/thaw cycles. Suggest spin the vial prior to opening. The antibody solution should be gently mixed before use.

**Note**

For laboratory research only, not for drug, diagnostic or other use.

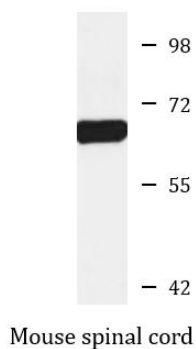
## Bioinformation

---

Gene Symbol	SLC6A2
Gene Full Name	solute carrier family 6 (neurotransmitter transporter), member 2
Background	This gene encodes a member of the sodium:neurotransmitter symporter family. This member is a multi-pass membrane protein, which is responsible for reuptake of norepinephrine into presynaptic nerve terminals and is a regulator of norepinephrine homeostasis. Mutations in this gene cause orthostatic intolerance, a syndrome characterized by lightheadedness, fatigue, altered mentation and syncope. Alternatively spliced transcript variants encoding different isoforms have been identified in this gene.[provided by RefSeq, Feb 2010]
Function	Amine transporter. Terminates the action of noradrenaline by its high affinity sodium-dependent reuptake into presynaptic terminals. [UniProt]
Calculated Mw	69 kDa
Cellular Localization	Membrane, Multi-pass membrane protein. [UniProt]

## Images

---



ARG40598 anti-Norepinephrine Transporter antibody WB image

Western blot: 25 µg of Mouse spinal cord lysate stained with ARG40598 anti-Norepinephrine Transporter antibody at 1:1000 dilution.