

ARG40595 anti-KDEL antibody

Package: 100 µl
Store at: -20°C

Summary

Product Description	Rabbit Polyclonal antibody recognizes KDEL
Tested Reactivity	Hu, Ms, Rat
Tested Application	FACS, ICC/IF, IHC-P, WB
Host	Rabbit
Clonality	Polyclonal
Isotype	IgG
Target Name	KDEL
Species	Human
Immunogen	Synthetic peptide derived around KDEL (Lys-Asp-Glu-Leu).
Conjugation	Un-conjugated
Alternate Names	Lys-Asp-Glu-Leu; Lysine-aspartic acid-glutamate-leucine

Application Instructions

Application table	Application	Dilution
	FACS	1:50
	ICC/IF	1:50 - 1:200
	IHC-P	1:50 - 1:200
	WB	1:500 - 1:2000

Application Note * The dilutions indicate recommended starting dilutions and the optimal dilutions or concentrations should be determined by the scientist.

Properties

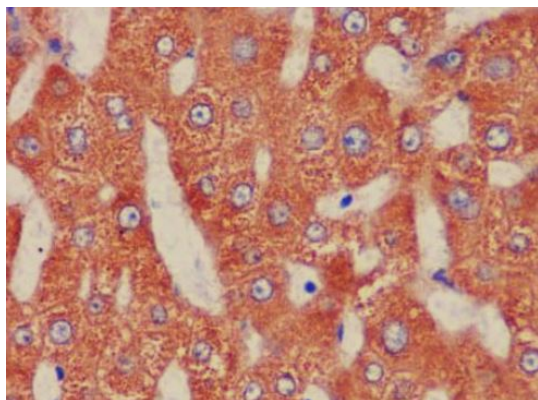
Form	Liquid
Purification	Affinity purified.
Buffer	PBS (pH 7.4), 0.02% Sodium azide and 50% Glycerol.
Preservative	0.02% Sodium azide
Stabilizer	50% Glycerol
Storage instruction	For continuous use, store undiluted antibody at 2-8°C for up to a week. For long-term storage, aliquot and store at -20°C. Storage in frost free freezers is not recommended. Avoid repeated freeze/thaw cycles. Suggest spin the vial prior to opening. The antibody solution should be gently mixed before use.
Note	For laboratory research only, not for drug, diagnostic or other use.

Bioinformation

Calculated Mw

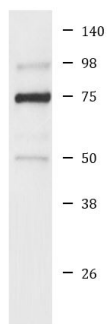
25 kDa

Images



ARG40595 anti-KDEL antibody IHC-P image

Immunohistochemistry: Paraffin-embedded Human liver tissue stained with ARG40595 anti-KDEL antibody.



HeLa

ARG40595 anti-KDEL antibody WB image

Western blot: HeLa cell lysate stained with ARG40595 anti-KDEL antibody.