

ARG40577
anti-alpha Tubulin antibodyPackage: 100 µl
Store at: -20°C

Summary

| | |
|---------------------|---|
| Product Description | Rabbit Polyclonal antibody recognizes alpha Tubulin |
| Tested Reactivity | <i>S. cerevisiae</i> |
| Tested Application | WB |
| Host | Rabbit |
| Clonality | Polyclonal |
| Isotype | IgG |
| Target Name | alpha Tubulin |
| Species | Yeast |
| Immunogen | Synthetic peptide derived from yeast alpha Tubulin. |
| Conjugation | Un-conjugated |

Application Instructions

| Application table | Application | Dilution |
|-------------------|-------------|------------------|
| | WB | 1:3000 - 1:10000 |

Application Note * The dilutions indicate recommended starting dilutions and the optimal dilutions or concentrations should be determined by the scientist.

Properties

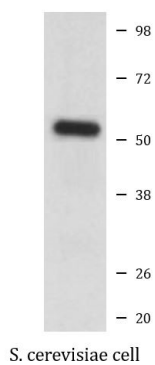
| | |
|---------------------|---|
| Form | Liquid |
| Purification | Affinity purified. |
| Buffer | PBS (pH 7.4), 150 mM NaCl, 0.02% Sodium azide and 50% Glycerol. |
| Preservative | 0.02% Sodium azide |
| Stabilizer | 50% Glycerol |
| Storage instruction | For continuous use, store undiluted antibody at 2-8°C for up to a week. For long-term storage, aliquot and store at -20°C. Storage in frost free freezers is not recommended. Avoid repeated freeze/thaw cycles. Suggest spin the vial prior to opening. The antibody solution should be gently mixed before use. |
| Note | For laboratory research only, not for drug, diagnostic or other use. |

Bioinformation

| | |
|----------------|--------------------|
| Gene Symbol | TUB1 |
| Gene Full Name | alpha-tubulin TUB1 |

| | |
|---------------|---|
| Function | Tubulin is the major constituent of microtubules. It binds two moles of GTP, one at an exchangeable site on the beta chain and one at a non-exchangeable site on the alpha chain. [UniProt] |
| Research Area | Signaling Transduction antibody; Loading Control antibody |
| Calculated Mw | 50 kDa |

Images



ARG40577 anti-alpha Tubulin antibody WB image

Western blot: *Saccharomyces cerevisiae* (yeast) cell lysate stained with ARG40577 anti-alpha Tubulin antibody.