

**ARG40544**  
**anti-CD138 / Syndecan 1 antibody**Package: 100 µl  
Store at: -20°C

### Summary

Product Description	Rabbit Polyclonal antibody recognizes CD138 / Syndecan 1
Tested Reactivity	Hu, Ms, Rat
Tested Application	FACS, ICC/IF, IHC-P, WB
Host	Rabbit
Clonality	Polyclonal
Isotype	IgG
Target Name	CD138 / Syndecan 1
Species	Human
Immunogen	Synthetic peptide derived from Human Syndecan 1.
Conjugation	Un-conjugated
Alternate Names	CD antigen CD138; syndecan; CD138; SDC; Syndecan-1; SYND1

### Application Instructions

Application table	Application	Dilution
	FACS	Assay-dependent
	ICC/IF	1:50 - 1:200
	IHC-P	1:100 - 1:500
	WB	1:500 - 1:2000
Application Note	* The dilutions indicate recommended starting dilutions and the optimal dilutions or concentrations should be determined by the scientist.	
Observed Size	35 kDa	

### Properties

Form	Liquid
Purification	Affinity purified.
Buffer	PBS (pH 7.4), 150 mM NaCl, 0.02% Sodium azide and 50% Glycerol.
Preservative	0.02% Sodium azide
Stabilizer	50% Glycerol
Storage instruction	For continuous use, store undiluted antibody at 2-8°C for up to a week. For long-term storage, aliquot and store at -20°C. Storage in frost free freezers is not recommended. Avoid repeated freeze/thaw cycles. Suggest spin the vial prior to opening. The antibody solution should be gently mixed before use.

Note

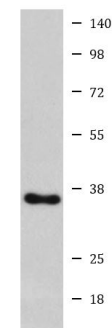
For laboratory research only, not for drug, diagnostic or other use.

## Bioinformation

---

Gene Symbol	SDC1
Gene Full Name	syndecan 1
Background	The protein encoded by this gene is a transmembrane (type I) heparan sulfate proteoglycan and is a member of the syndecan proteoglycan family. The syndecans mediate cell binding, cell signaling, and cytoskeletal organization and syndecan receptors are required for internalization of the HIV-1 tat protein. The syndecan-1 protein functions as an integral membrane protein and participates in cell proliferation, cell migration and cell-matrix interactions via its receptor for extracellular matrix proteins. Altered syndecan-1 expression has been detected in several different tumor types. While several transcript variants may exist for this gene, the full-length nature of only two have been described to date. These two represent the major variants of this gene and encode the same protein. [provided by RefSeq, Jul 2008]
Function	Cell surface proteoglycan that bears both heparan sulfate and chondroitin sulfate and that links the cytoskeleton to the interstitial matrix. [UniProt]
Calculated Mw	32 kDa
PTM	Shedding is enhanced by a number of factors such as heparanase, thrombin or EGF. Also by stress and wound healing. PMA-mediated shedding is inhibited by TIMP3. [UniProt]
Cellular Localization	Membrane; Single-pass type I membrane protein. Secreted, exosome. Note=Shedding of the ectodomain produces a soluble form. [UniProt]

## Images



Ramos

ARG40544 anti-CD138 / Syndecan 1 antibody WB image

Western blot: Ramos cell lysate stained with ARG40544 anti-CD138 / Syndecan 1 antibody.