

## ARG40529 anti-OGDH antibody

Package: 100 µl  
Store at: -20°C

### Summary

Product Description	Rabbit Polyclonal antibody recognizes OGDH
Tested Reactivity	Hu, Ms, Rat
Tested Application	ICC/IF, IHC-P, WB
Host	Rabbit
Clonality	Polyclonal
Isotype	IgG
Target Name	OGDH
Species	Human
Immunogen	Recombinant fusion protein corresponding to aa. 148-427 of Human OGDH (NP_001003941.1).
Conjugation	Un-conjugated
Alternate Names	2-oxoglutarate dehydrogenase complex component E1; EC 1.2.4.2; AKGDH; OGDC-E1; OGDC; 2-oxoglutarate dehydrogenase, mitochondrial; E1k; Alpha-ketoglutarate dehydrogenase

### Application Instructions

Application table	Application	Dilution
	ICC/IF	1:50 - 1:200
	IHC-P	1:50 - 1:200
	WB	1:500 - 1:2000
Application Note	* The dilutions indicate recommended starting dilutions and the optimal dilutions or concentrations should be determined by the scientist.	
Positive Control	Mouse brain	
Observed Size	110 kDa	

### Properties

Form	Liquid
Purification	Affinity purified.
Buffer	PBS (pH 7.3), 0.02% Sodium azide and 50% Glycerol.
Preservative	0.02% Sodium azide
Stabilizer	50% Glycerol
Storage instruction	For continuous use, store undiluted antibody at 2-8°C for up to a week. For long-term storage, aliquot and store at -20°C. Storage in frost free freezers is not recommended. Avoid repeated freeze/thaw cycles. Suggest spin the vial prior to opening. The antibody solution should be gently mixed before use.

Note For laboratory research only, not for drug, diagnostic or other use.

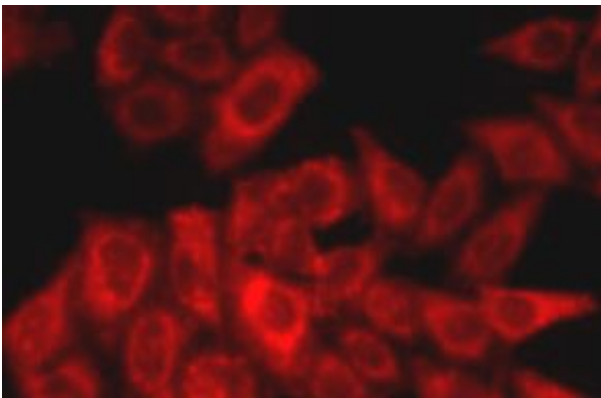
## Bioinformation

---

Gene Symbol	OGDH
Gene Full Name	oxoglutarate (alpha-ketoglutarate) dehydrogenase (lipoamide)
Background	This gene encodes one subunit of the 2-oxoglutarate dehydrogenase complex. This complex catalyzes the overall conversion of 2-oxoglutarate (alpha-ketoglutarate) to succinyl-CoA and CO(2) during the Krebs cycle. The protein is located in the mitochondrial matrix and uses thiamine pyrophosphate as a cofactor. A congenital deficiency in 2-oxoglutarate dehydrogenase activity is believed to lead to hypotonia, metabolic acidosis, and hyperlactatemia. Alternative splicing results in multiple transcript variants encoding distinct isoforms.[provided by RefSeq, Sep 2009]
Function	The 2-oxoglutarate dehydrogenase complex catalyzes the overall conversion of 2-oxoglutarate to succinyl-CoA and CO(2). It contains multiple copies of three enzymatic components: 2-oxoglutarate dehydrogenase (E1), dihydrolipoamide succinyltransferase (E2) and lipoamide dehydrogenase (E3). [UniProt]
Calculated Mw	116 kDa
Cellular Localization	Mitochondrion matrix. Nucleus. Note=Mainly localizes in the mitochondrion. A small fraction localizes to the nucleus, where the 2-oxoglutarate dehydrogenase complex is required for histone succinylation. [UniProt]

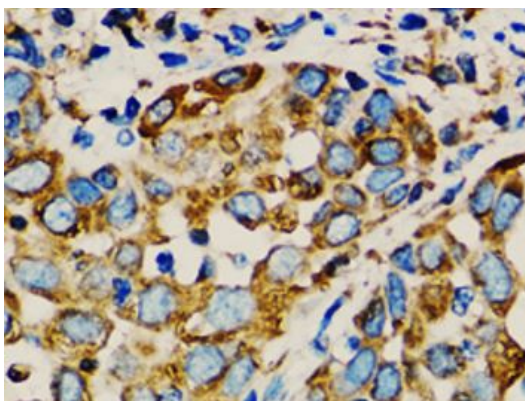
## Images

---



ARG40529 anti-OGDH antibody ICC/IF image

Immunofluorescence: U2OS cells stained with ARG40529 anti-OGDH antibody.

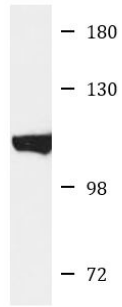


ARG40529 anti-OGDH antibody IHC-P image

Immunohistochemistry: Paraffin-embedded Human lung cancer tissue stained with ARG40529 anti-OGDH antibody at 1:100 dilution.

ARG40529 anti-OGDH antibody WB image

Western blot: 25 µg of Mouse brain lysate stained with ARG40529 anti-OGDH antibody at 1:1000 dilution.



Mouse brain

---