

ARG40514 anti-OAT antibody

Package: 100 µl
Store at: -20°C

Summary

Product Description	Rabbit Polyclonal antibody recognizes OAT
Tested Reactivity	Hu, Ms, Rat
Tested Application	FACS, ICC/IF, IHC-P, WB
Host	Rabbit
Clonality	Polyclonal
Isotype	IgG
Target Name	OAT
Species	Human
Immunogen	KLH-conjugated synthetic peptide corresponding to aa. 27-55 of Human OAT.
Conjugation	Un-conjugated
Alternate Names	OATASE; OKT; Ornithine aminotransferase, mitochondrial; Ornithine--oxo-acid aminotransferase; GACR; HOGA; Ornithine delta-aminotransferase; EC 2.6.1.13

Application Instructions

Application table	Application	Dilution
	FACS	1:10 - 1:50
	ICC/IF	1:10 - 1:50
	IHC-P	1:10 - 1:50
	WB	1:1000
Application Note	* The dilutions indicate recommended starting dilutions and the optimal dilutions or concentrations should be determined by the scientist.	
Positive Control	293	

Properties

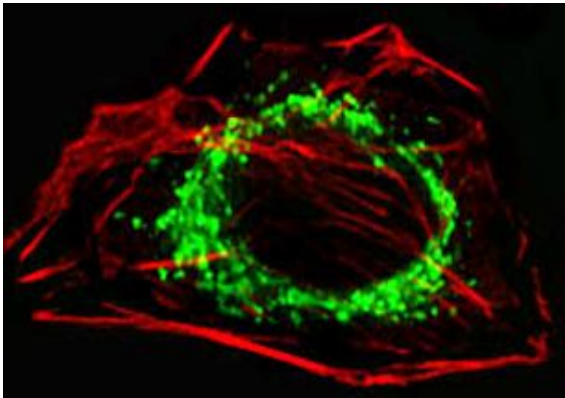
Form	Liquid
Purification	Purification with Protein A and immunogen peptide.
Buffer	PBS and 0.09% (W/V) Sodium azide.
Preservative	0.09% (W/V) Sodium azide.
Storage instruction	For continuous use, store undiluted antibody at 2-8°C for up to a week. For long-term storage, aliquot and store at -20°C or below. Storage in frost free freezers is not recommended. Avoid repeated freeze/thaw cycles. Suggest spin the vial prior to opening. The antibody solution should be gently mixed before use.

Note For laboratory research only, not for drug, diagnostic or other use.

Bioinformation

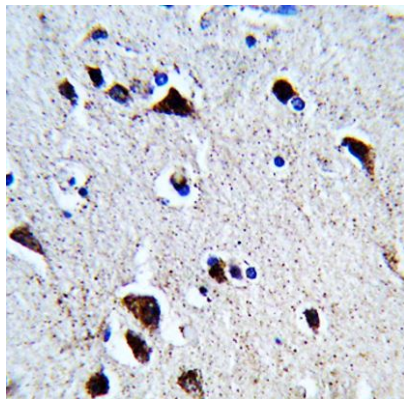
Gene Symbol	OAT
Gene Full Name	ornithine aminotransferase
Background	This gene encodes the mitochondrial enzyme ornithine aminotransferase, which is a key enzyme in the pathway that converts arginine and ornithine into the major excitatory and inhibitory neurotransmitters glutamate and GABA. Mutations that result in a deficiency of this enzyme cause the autosomal recessive eye disease Gyrate Atrophy. Alternatively spliced transcript variants encoding different isoforms have been described. Related pseudogenes have been defined on the X chromosome. [provided by RefSeq, Jan 2010]
Calculated Mw	49 kDa
Cellular Localization	Mitochondrion matrix. [UniProt]

Images



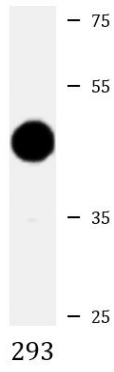
ARG40514 anti-OAT antibody ICC/IF image

Immunofluorescence: A549 cells were fixed with 4% PFA (20 min), permeabilized with Triton X-100 (0.1%, 10 min), then stained with ARG40514 anti-OAT antibody (green) at 1:25, 1 hour at 37°C. Cytoplasmic actin was counterstained with Alexa Fluor® 555 conjugated Phalloidin (red).



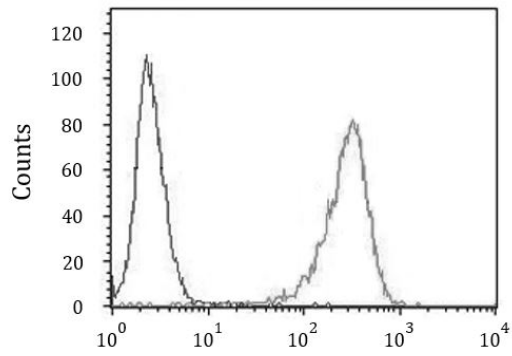
ARG40514 anti-OAT antibody IHC-P image

Immunohistochemistry: Formalin-fixed and paraffin-embedded Human brain tissue stained with ARG40514 anti-OAT antibody.



ARG40514 anti-OAT antibody WB image

Western blot: 20 μ g of 293 whole cell lysate stained with ARG40514 anti-OAT antibody at 1:1000 dilution.



ARG40514 anti-OAT antibody FACS image

Flow Cytometry: 293 cells stained with ARG40514 anti-OAT antibody (right histogram) or without primary antibody as control (left histogram), followed by incubation with FITC labelled secondary antibody.