

## ARG40485 anti-MATN3 / Matrilin 3 antibody

Package: 50 µg  
Store at: -20°C

### Summary

Product Description	Rabbit Polyclonal antibody recognizes MATN3 / Matrilin 3
Tested Reactivity	Ms, Rat
Tested Application	ICC/IF, WB
Host	Rabbit
Clonality	Polyclonal
Isotype	IgG
Target Name	MATN3 / Matrilin 3
Species	Human
Immunogen	Synthetic peptide around 13 aa from (Center) of Human MATN3.
Conjugation	Un-conjugated
Alternate Names	Matrilin-3; HOA; OS2; OADIP; DIPOA; EDM5

### Application Instructions

Application table	Application	Dilution
	ICC/IF	2.5 µg/ml
	WB	1 - 2 µg/ml
Application Note	* The dilutions indicate recommended starting dilutions and the optimal dilutions or concentrations should be determined by the scientist.	
Positive Control	Rat thymus	

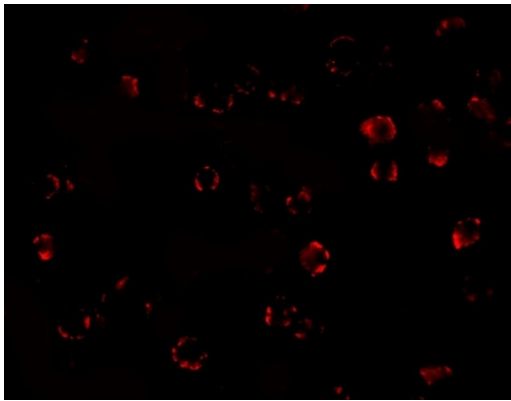
### Properties

Form	Liquid
Purification	Affinity purification with immunogen.
Buffer	PBS and 0.02% Sodium azide.
Preservative	0.02% Sodium azide
Concentration	1 mg/ml
Storage instruction	For continuous use, store undiluted antibody at 2-8°C for up to a week. For long-term storage, aliquot and store at -20°C or below. Storage in frost free freezers is not recommended. Avoid repeated freeze/thaw cycles. Suggest spin the vial prior to opening. The antibody solution should be gently mixed before use.
Note	For laboratory research only, not for drug, diagnostic or other use.

## Bioinformation

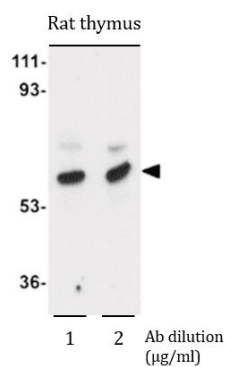
Gene Symbol	MATN3
Gene Full Name	matrilin 3
Background	This gene encodes a member of von Willebrand factor A domain containing protein family. This family of proteins is thought to be involved in the formation of filamentous networks in the extracellular matrices of various tissues. This protein contains two von Willebrand factor A domains; it is present in the cartilage extracellular matrix and has a role in the development and homeostasis of cartilage and bone. Mutations in this gene result in multiple epiphyseal dysplasia. [provided by RefSeq, Jul 2008]
Function	Major component of the extracellular matrix of cartilage and may play a role in the formation of extracellular filamentous networks. [UniProt]
Calculated Mw	53 kDa
Cellular Localization	Secreted. [UniProt]

## Images



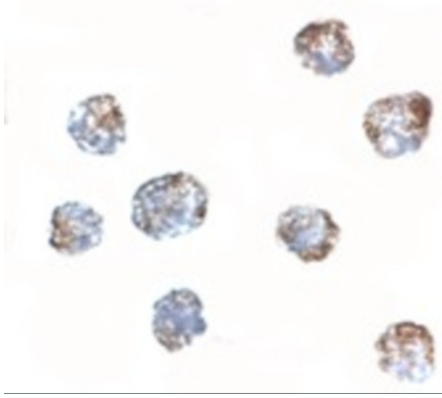
ARG40485 anti-MATN3 / Matrilin 3 antibody ICC/IF image

Immunofluorescence: 3T3 cells stained with ARG40485 anti-MATN3 / Matrilin 3 antibody at 20 µg/ml dilution.



ARG40485 anti-MATN3 / Matrilin 3 antibody WB image

Western blot: Rat thymus tissue lysate stained with ARG40485 anti-MATN3 / Matrilin 3 antibody at 1 and 2 µg/ml dilution.



**ARG40485 anti-MATN3 / Matrilin 3 antibody ICC image**

Immunocytochemistry: 3T3 cells stained with ARG40485 anti-MATN3 / Matrilin 3 antibody at 2.5  $\mu\text{g}/\text{ml}$  dilution.