

ARG40472 anti-MSRA antibody

Package: 100 µl
Store at: -20°C

Summary

Product Description	Rabbit Polyclonal antibody recognizes MSRA
Tested Reactivity	Hu, Ms
Predict Reactivity	Bov
Tested Application	FACS, ICC/IF, IHC-P, WB
Host	Rabbit
Clonality	Polyclonal
Isotype	IgG
Target Name	MSRA
Species	Human
Immunogen	KLH-conjugated synthetic peptide corresponding to aa. 34-63 of Human MSRA.
Conjugation	Un-conjugated
Alternate Names	EC 1.8.4.11; Peptide Met; O; Peptide-methionine; Protein-methionine-S-oxide reductase; Mitochondrial peptide methionine sulfoxide reductase; S; PMSR

Application Instructions

Application table	Application	Dilution
	FACS	1:10 - 1:50
	ICC/IF	1:100
	IHC-P	1:10 - 1:50
	WB	1:1000
Application Note	* The dilutions indicate recommended starting dilutions and the optimal dilutions or concentrations should be determined by the scientist.	
Positive Control	Human kidney	
Observed Size	~ 26 kDa	

Properties

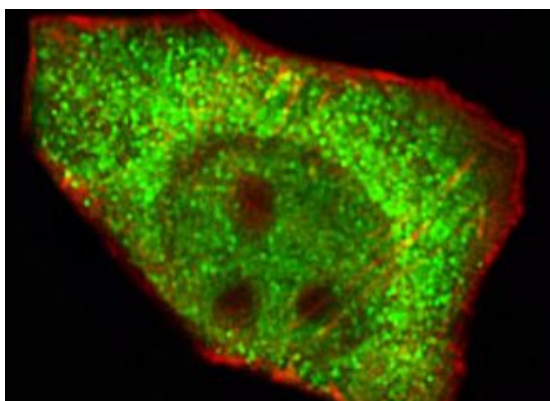
Form	Liquid
Purification	This antibody is prepared by Saturated Ammonium Sulfate (SAS) precipitation followed by dialysis against PBS.
Buffer	PBS and 0.09% (W/V) Sodium azide.
Preservative	0.09% (W/V) Sodium azide.

Storage instruction	For continuous use, store undiluted antibody at 2-8°C for up to a week. For long-term storage, aliquot and store at -20°C or below. Storage in frost free freezers is not recommended. Avoid repeated freeze/thaw cycles. Suggest spin the vial prior to opening. The antibody solution should be gently mixed before use.
Note	For laboratory research only, not for drug, diagnostic or other use.

Bioinformation

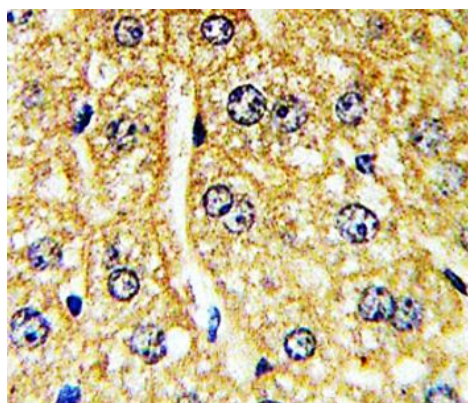
Gene Symbol	MSRA
Gene Full Name	methionine sulfoxide reductase A
Background	This gene encodes a ubiquitous and highly conserved protein that carries out the enzymatic reduction of methionine sulfoxide to methionine. Human and animal studies have shown the highest levels of expression in kidney and nervous tissue. The protein functions in the repair of oxidatively damaged proteins to restore biological activity. Alternative splicing results in multiple transcript variants. [provided by RefSeq, May 2014]
Function	Has an important function as a repair enzyme for proteins that have been inactivated by oxidation. Catalyzes the reversible oxidation-reduction of methionine sulfoxide in proteins to methionine. [UniProt]
Calculated Mw	26 kDa
Cellular Localization	Isoform 1: Mitochondrion. Isoform 2: Cytoplasm. Isoform 3: Cytoplasm. Nucleus. Isoform 5: Cytoplasm. Membrane; Lipid-anchor. [UniProt]

Images



ARG40472 anti-MSRA antibody ICC/IF image

Immunofluorescence: A549 cells stained with ARG40472 anti-MSRA antibody (green) at 1:100 dilution. Cytoplasmic actin was counterstained with Dylight Fluor® 554 conjugated Phalloidin (red).

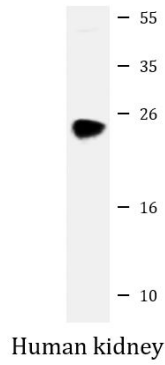


ARG40472 anti-MSRA antibody IHC-P image

Immunohistochemistry: Formalin-fixed and paraffin-embedded Human hepatocarcinoma stained with ARG40472 anti-MSRA antibody.

ARG40472 anti-MSRA antibody WB image

Western blot: 20 µg of Human kidney lysate stained with ARG40472 anti-MSRA antibody at 1:1000 dilution.



ARG40472 anti-MSRA antibody FACS image

Flow Cytometry: MDA-MB435 cells stained with ARG40472 anti-MSRA antibody (bottom histogram) or without primary antibody as control (top histogram), followed by incubation with FITC labelled secondary antibody.

