

## ARG40429 anti-SCF antibody

Package: 100 µl  
Store at: -20°C

### Summary

Product Description	Rabbit Polyclonal antibody recognizes SCF
Tested Reactivity	Hu
Tested Application	FACS, ICC/IF, IHC-P, WB
Host	Rabbit
Clonality	Polyclonal
Isotype	IgG
Target Name	SCF
Species	Human
Immunogen	Synthetic peptide derived from Human SCF.
Conjugation	Un-conjugated
Alternate Names	SCF; SHEP7; MGF; FPHH; sKITLG; Stem cell factor; KL-1; Kitl; Kit ligand; Mast cell growth factor; c-Kit ligand; FPH2; SF

### Application Instructions

Application table	Application	Dilution
	FACS	Assay-dependent
	ICC/IF	Assay-dependent
	IHC-P	1:50 - 1:200
	WB	1:500 - 1:2000

**Application Note** \* The dilutions indicate recommended starting dilutions and the optimal dilutions or concentrations should be determined by the scientist.

### Properties

Form	Liquid
Purification	Affinity purified.
Buffer	PBS (pH 7.4), 0.02% Sodium azide and 50% Glycerol.
Preservative	0.02% Sodium azide
Stabilizer	50% Glycerol
Storage instruction	For continuous use, store undiluted antibody at 2-8°C for up to a week. For long-term storage, aliquot and store at -20°C. Storage in frost free freezers is not recommended. Avoid repeated freeze/thaw cycles. Suggest spin the vial prior to opening. The antibody solution should be gently mixed before use.
Note	For laboratory research only, not for drug, diagnostic or other use.

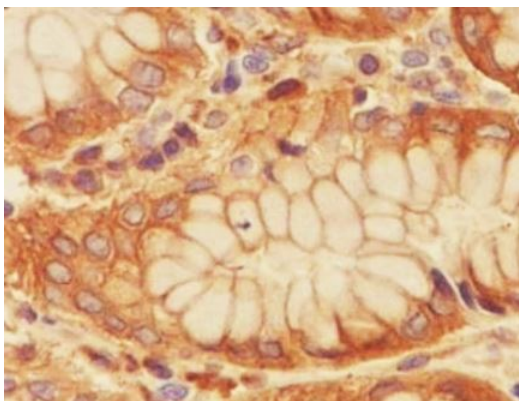
## Bioinformation

---

Gene Symbol	KITLG
Gene Full Name	KIT ligand
Background	This gene encodes the ligand of the tyrosine-kinase receptor encoded by the KIT locus. This ligand is a pleiotropic factor that acts in utero in germ cell and neural cell development, and hematopoiesis, all believed to reflect a role in cell migration. In adults, it functions pleiotropically, while mostly noted for its continued requirement in hematopoiesis. Two transcript variants encoding different isoforms have been found for this gene. [provided by RefSeq, Jul 2008]
Function	Ligand for the receptor-type protein-tyrosine kinase KIT. Plays an essential role in the regulation of cell survival and proliferation, hematopoiesis, stem cell maintenance, gametogenesis, mast cell development, migration and function, and in melanogenesis. KITLG/SCF binding can activate several signaling pathways. Promotes phosphorylation of PIK3R1, the regulatory subunit of phosphatidylinositol 3-kinase, and subsequent activation of the kinase AKT1. KITLG/SCF and KIT also transmit signals via GRB2 and activation of RAS, RAF1 and the MAP kinases MAPK1/ERK2 and/or MAPK3/ERK1. KITLG/SCF and KIT promote activation of STAT family members STAT1, STAT3 and STAT5. KITLG/SCF and KIT promote activation of PLCG1, leading to the production of the cellular signaling molecules diacylglycerol and inositol 1,4,5-trisphosphate. KITLG/SCF acts synergistically with other cytokines, probably interleukins. [UniProt]
Calculated Mw	31 kDa
PTM	<p>A soluble form (sKITLG) is produced by proteolytic processing of isoform 1 in the extracellular domain.</p> <p>Found in two differentially glycosylated forms, LMW-SCF and HMW-SCF. LMW-SCF is fully N-glycosylated at Asn-145, partially N-glycosylated at Asn-90, O-glycosylated at Ser-167, Thr-168 and Thr-180, and not glycosylated at Asn-97 or Asn-118. HMW-SCF is N-glycosylated at Asn-118, Asn-90 and Asn-145, O-glycosylated at Ser-167, Thr-168 and Thr-180, and not glycosylated at Asn-97.</p> <p>A soluble form exists as a cleavage product of the extracellular domain. [UniProt]</p>
Cellular Localization	Isoform 1: Cell membrane; Single-pass type I membrane protein. Isoform 2: Cytoplasm. Cytoplasm, cytoskeleton. Cell membrane; Single-pass type I membrane protein. Cell projection, lamellipodium. Cell projection, filopodium. Soluble KIT ligand: Secreted. [UniProt]

## Images

---

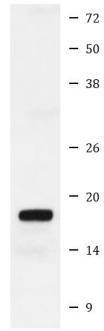


ARG40429 anti-SCF antibody IHC-P image

Immunohistochemistry: Paraffin-embedded Human stomach tissue stained with ARG40429 anti-SCF antibody.

ARG40429 anti-SCF antibody WB image

Western blot: Recombinant SCF protein stained with ARG40429 anti-SCF antibody.



SCF protein