

ARG40423 anti-MYBPC2 antibody

Package: 50 µl
Store at: -20°C

Summary

Product Description	Rabbit Polyclonal antibody recognizes MYBPC2
Tested Reactivity	Hu
Predict Reactivity	Ms, Rat, Cow, Dog, Gpig, Hrs
Tested Application	WB
Host	Rabbit
Clonality	Polyclonal
Isotype	IgG
Target Name	MYBPC2
Species	Human
Immunogen	Synthetic peptide around the N-terminal region of Human MYBPC2. (within the following region: KEAPPEDQSPTAEPTGVFLKPKDPSVSVETGKDAAVVVAKVNGKELPKPT)
Conjugation	Un-conjugated
Alternate Names	MYBPCF; C-protein, skeletal muscle fast isoform; Fast MyBP-C; MYBPC; Myosin-binding protein C, fast-type

Application Instructions

Predict Reactivity Note	Predicted Homology Based On Immunogen Sequence: Cow: 100%; Dog: 100%; Guinea Pig: 100%; Horse: 85%; Mouse: 100%; Rat: 93%				
Application table	<table><thead><tr><th>Application</th><th>Dilution</th></tr></thead><tbody><tr><td>WB</td><td>0.2 - 1 ug/ml</td></tr></tbody></table>	Application	Dilution	WB	0.2 - 1 ug/ml
Application	Dilution				
WB	0.2 - 1 ug/ml				
Application Note	* The dilutions indicate recommended starting dilutions and the optimal dilutions or concentrations should be determined by the scientist.				

Properties

Form	Liquid
Purification	Affinity purified.
Buffer	PBS, 0.09% (w/v) Sodium azide and 2% Sucrose.
Preservative	0.09% (w/v) Sodium azide
Stabilizer	2% Sucrose
Concentration	Batch dependent: 0.5 - 1 mg/ml
Storage instruction	For continuous use, store undiluted antibody at 2-8°C for up to a week. For long-term storage, aliquot and store at -20°C or below. Storage in frost free freezers is not recommended. Avoid repeated freeze/thaw cycles. Suggest spin the vial prior to opening. The antibody solution should be gently mixed

before use.

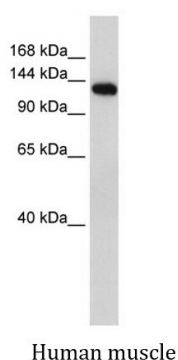
Note

For laboratory research only, not for drug, diagnostic or other use.

Bioinformation

Gene Symbol	MYBPC2
Gene Full Name	myosin binding protein C, fast type
Background	This gene encodes a member of the myosin-binding protein C family. This family includes the fast-, slow- and cardiac-type isoforms, each of which is a myosin-associated protein found in the cross-bridge-bearing zone (C region) of A bands in striated muscle. The protein encoded by this locus is referred to as the fast-type isoform. Mutations in the related but distinct genes encoding the slow-type and cardiac-type isoforms have been associated with distal arthrogyrosis, type 1 and hypertrophic cardiomyopathy, respectively. [provided by RefSeq, Jul 2012]
Function	Thick filament-associated protein located in the crossbridge region of vertebrate striated muscle a bands. In vitro it binds MHC, F-actin and native thin filaments, and modifies the activity of actin-activated myosin ATPase. It may modulate muscle contraction or may play a more structural role. [UniProt]
Calculated Mw	128 kDa

Images



Human muscle

ARG40423 anti-MYBPC2 antibody WB image

Western blot: Human muscle lysate stained with ARG40423 anti-MYBPC2 antibody at 0.2 - 1 ug/ml dilution.