

## ARG40422 anti-MMP17 / MT4-MMP antibody

Package: 50 µl  
Store at: -20°C

### Summary

Product Description	Rabbit Polyclonal antibody recognizes MMP17 / MT4-MMP
Tested Reactivity	Hu
Predict Reactivity	Cow, Hrs
Tested Application	WB
Host	Rabbit
Clonality	Polyclonal
Isotype	IgG
Target Name	MMP17 / MT4-MMP
Species	Human
Immunogen	Synthetic peptide from Human MMP17 / MT4-MMP. (located within the following region: YPQSTARDWLVCGDSQADGSVAAGVDAAEGRAPPQHDQSRSEDDGYEVC)
Conjugation	Un-conjugated
Alternate Names	Membrane-type matrix metalloproteinase 4; MT-MMP 4; MT4-MMP; EC 3.4.24.-; MT4MMP; MTMMP4; MMP-17; Membrane-type-4 matrix metalloproteinase; Matrix metalloproteinase-17

### Application Instructions

Predict Reactivity Note	Predicted Homology Based On Immunogen Sequence: Cow: 79%; Horse: 93%				
Application table	<table><thead><tr><th>Application</th><th>Dilution</th></tr></thead><tbody><tr><td>WB</td><td>1 µg/ml</td></tr></tbody></table>	Application	Dilution	WB	1 µg/ml
Application	Dilution				
WB	1 µg/ml				
Application Note	* The dilutions indicate recommended starting dilutions and the optimal dilutions or concentrations should be determined by the scientist.				

### Properties

Form	Liquid
Purification	Affinity purified.
Buffer	PBS, 0.09% (w/v) Sodium azide and 2% Sucrose.
Preservative	0.09% (w/v) Sodium azide
Stabilizer	2% Sucrose
Concentration	Batch dependent: 0.5 - 1 mg/ml
Storage instruction	For continuous use, store undiluted antibody at 2-8°C for up to a week. For long-term storage, aliquot and store at -20°C or below. Storage in frost free freezers is not recommended. Avoid repeated freeze/thaw cycles. Suggest spin the vial prior to opening. The antibody solution should be gently mixed before use.

**Note**

For laboratory research only, not for drug, diagnostic or other use.

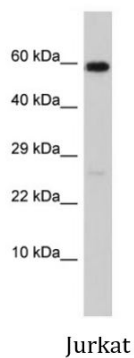
## Bioinformation

---

Gene Symbol	MMP17
Gene Full Name	matrix metalloproteinase 17 (membrane-inserted)
Background	Proteins of the matrix metalloproteinase (MMP) family are involved in the breakdown of extracellular matrix in normal physiological processes, such as embryonic development, reproduction, and tissue remodeling, as well as in disease processes, such as arthritis and metastasis. Most MMP's are secreted as inactive proproteins which are activated when cleaved by extracellular proteinases. The protein encoded by this gene is considered a member of the membrane-type MMP (MT-MMP) subfamily. However, this protein is unique among the MT-MMP's in that it is a GPI-anchored protein rather than a transmembrane protein. The protein activates MMP-2 by cleavage. [provided by RefSeq, Jul 2008]
Function	Endopeptidase that degrades various components of the extracellular matrix, such as fibrin. May be involved in the activation of membrane-bound precursors of growth factors or inflammatory mediators, such as tumor necrosis factor-alpha. May also be involved in tumoral process. Not obvious if able to proteolytically activate progelatinase A. Does not hydrolyze collagen types I, II, III, IV and V, gelatin, fibronectin, laminin, decorin nor alpha1-antitrypsin. [UniProt]
Calculated Mw	67 kDa
PTM	The precursor is cleaved by a furin endopeptidase. [UniProt]
Cellular Localization	Isoform Long: Cell membrane; Lipid-anchor, GPI-anchor; Extracellular side. Secreted, extracellular space, extracellular matrix. [UniProt]

## Images

---



ARG40422 anti-MMP17 / MT4-MMP antibody WB image

Western blot: 50 ug of Jurkat whole cell lysate stained with ARG40422 anti-MMP17 / MT4-MMP antibody at 1 ug/ml dilution.