

ARG40413 anti-SLC16A7 / MCT2 antibody

Package: 100 µl
Store at: -20°C

Summary

Product Description	Rabbit Polyclonal antibody recognizes SLC16A7 / MCT2
Tested Reactivity	Hu, Rat
Tested Application	ICC/IF, WB
Host	Rabbit
Clonality	Polyclonal
Isotype	IgG
Target Name	SLC16A7 / MCT2
Species	Human
Immunogen	Synthetic peptide within aa. 400 to the C-terminus of Human SLC16A7 (NP_001257551.1).
Conjugation	Un-conjugated
Alternate Names	Monocarboxylate transporter 2; Solute carrier family 16 member 7; MCT2; MCT 2

Application Instructions

Application table	Application	Dilution
	ICC/IF	1:50 - 1:200
	WB	1:500 - 1:2000
Application Note	* The dilutions indicate recommended starting dilutions and the optimal dilutions or concentrations should be determined by the scientist.	
Positive Control	HepG2 and Mouse kidney.	
Observed Size	~ 45 kDa	

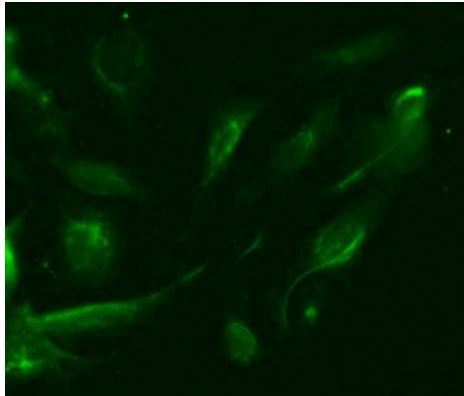
Properties

Form	Liquid
Purification	Affinity purified.
Buffer	PBS (pH 7.3), 0.02% Sodium azide and 50% Glycerol.
Preservative	0.02% Sodium azide
Stabilizer	50% Glycerol
Storage instruction	For continuous use, store undiluted antibody at 2-8°C for up to a week. For long-term storage, aliquot and store at -20°C. Storage in frost free freezers is not recommended. Avoid repeated freeze/thaw cycles. Suggest spin the vial prior to opening. The antibody solution should be gently mixed before use.
Note	For laboratory research only, not for drug, diagnostic or other use.

Bioinformation

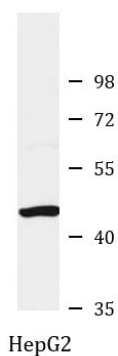
Gene Symbol	SLC16A7
Gene Full Name	solute carrier family 16 (monocarboxylate transporter), member 7
Background	This gene is a member of the monocarboxylate transporter family. Members in this family transport metabolites, such as lactate, pyruvate, and ketone bodies. The protein encoded by this gene catalyzes the proton-linked transport of monocarboxylates and has the highest affinity for pyruvate. This protein has been reported to be more highly expressed in prostate and colorectal cancer specimens when compared to control specimens. Alternative splicing results in multiple transcript variants. [provided by RefSeq, Jul 2012]
Function	Proton-coupled monocarboxylate transporter. Catalyzes the rapid transport across the plasma membrane of many monocarboxylates such as lactate, pyruvate, branched-chain oxo acids derived from leucine, valine and isoleucine, and the ketone bodies acetoacetate, beta-hydroxybutyrate and acetate. Functions as high-affinity pyruvate transporter. [UniProt]
Calculated Mw	52 kDa
Cellular Localization	Cell membrane, Multi-pass membrane protein. [UniProt]

Images



ARG40413 anti-SLC16A7 / MCT2 antibody ICC/IF image

Immunofluorescence: U2OS cells stained with ARG40413 anti-SLC16A7 / MCT2 antibody at 1:100 dilution.



ARG40413 anti-SLC16A7 / MCT2 antibody WB image

Western blot: 25 ug of HepG2 cell lysate stained with ARG40413 anti-SLC16A7 / MCT2 antibody at 1:3000 dilution.

ARG40413 anti-SLC16A7 / MCT2 antibody WB image

Western blot: 25 ug of Mouse kidney tissue lysate stained with ARG40413 anti-SLC16A7 / MCT2 antibody at 1:3000 dilution.

