

## ARG40387 anti-INHBC / Inhibin beta C chain antibody

Package: 100 µl  
Store at: -20°C

### Summary

|                     |  |
|---------------------|--|
| Product Description | Rabbit Polyclonal antibody recognizes INHBC / Inhibin beta C chain                           |
| Tested Reactivity   | Hu   |
| Predict Reactivity  | Ms, Rat  |
| Tested Application  | WB   |
| Host                | Rabbit   |
| Clonality           | Polyclonal   |
| Isotype             | IgG  |
| Target Name         | INHBC / Inhibin beta C chain   |
| Species             | Human  |
| Immunogen           | KLH-conjugated synthetic peptide within the C-terminal region of Human Inhibin beta C chain. |
| Conjugation         | Un-conjugated  |
| Alternate Names     | Inhibin beta C chain; Activin beta-C chain; IHBC   |

### Application Instructions

| Application table | <table><thead><tr><th>Application</th><th>Dilution</th></tr></thead><tbody><tr><td>WB</td><td>1:500 - 1:1000</td></tr></tbody></table>     | Application | Dilution | WB | 1:500 - 1:1000 |
|-------------------|--|-------------|----------|----|----------------|
| Application       | Dilution   |             |          |    |                |
| WB                | 1:500 - 1:1000   |             |          |    |                |
| Application Note  | * The dilutions indicate recommended starting dilutions and the optimal dilutions or concentrations should be determined by the scientist. |             |          |    |                |
| Observed Size     | 38 kDa   |             |          |    |                |

### Properties

|                     |   |
|---------------------|---|
| Form                | Liquid  |
| Purification        | Affinity purification with immunogen.   |
| Buffer              | 0.42% Potassium phosphate (pH 7.3), 0.87% NaCl, 0.01% Sodium azide and 30% Glycerol.  |
| Preservative        | 0.01% Sodium azide  |
| Stabilizer          | 30% Glycerol  |
| Storage instruction | For continuous use, store undiluted antibody at 2-8°C for up to a week. For long-term storage, aliquot and store at -20°C. Storage in frost free freezers is not recommended. Avoid repeated freeze/thaw cycles. Suggest spin the vial prior to opening. The antibody solution should be gently mixed before use. |
| Note                | For laboratory research only, not for drug, diagnostic or other use.  |

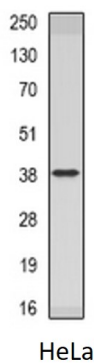
## Bioinformation

---

|                       |  |
|-----------------------|--|
| Gene Symbol           | INHBC  |
| Gene Full Name        | inhibin, beta C  |
| Background            | This gene encodes the beta C chain of inhibin, a member of the TGF-beta superfamily. This subunit forms heterodimers with beta A and beta B subunits. Inhibins and activins, also members of the TGF-beta superfamily, are hormones with opposing actions and are involved in hypothalamic, pituitary, and gonadal hormone secretion, as well as growth and differentiation of various cell types. [provided by RefSeq, Jul 2008]  |
| Function              | Inhibins and activins inhibit and activate, respectively, the secretion of follitropin by the pituitary gland. Inhibins/activins are involved in regulating a number of diverse functions such as hypothalamic and pituitary hormone secretion, gonadal hormone secretion, germ cell development and maturation, erythroid differentiation, insulin secretion, nerve cell survival, embryonic axial development or bone growth, depending on their subunit composition. Inhibins appear to oppose the functions of activins. [UniProt] |
| Calculated Mw         | 38 kDa   |
| Cellular Localization | Secreted. [UniProt]  |

## Images

---



ARG40387 anti-INHBC / Inhibin beta C chain antibody WB image

Western blot: HeLa whole cell lysate stained with ARG40387 anti-INHBC / Inhibin beta C chain antibody.