

ARG40383 anti-ITPKB antibody

Package: 100 µl
Store at: -20°C

Summary

Product Description	Rabbit Polyclonal antibody recognizes ITPKB
Tested Reactivity	Hu, Ms, Rat
Tested Application	WB
Host	Rabbit
Clonality	Polyclonal
Isotype	IgG
Target Name	ITPKB
Species	Human
Immunogen	KLH-conjugated synthetic peptide within the center region of Human ITPKB.
Conjugation	Un-conjugated
Alternate Names	IP3K B; Inositol-trisphosphate 3-kinase B; InsP 3-kinase B; IP3K-B; IP3-3KB; IP3KB; IP3 3-kinase B; EC 2.7.1.127; PIG37; IP3K; Inositol 1,4,5-trisphosphate 3-kinase B

Application Instructions

Application table	Application	Dilution
	WB	1:500 - 1:1000

Application Note * The dilutions indicate recommended starting dilutions and the optimal dilutions or concentrations should be determined by the scientist.

Properties

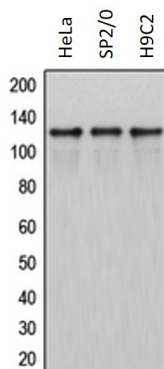
Form	Liquid
Purification	Affinity purification with immunogen.
Buffer	0.42% Potassium phosphate (pH 7.3), 0.87% NaCl, 0.01% Sodium azide and 30% Glycerol.
Preservative	0.01% Sodium azide
Stabilizer	30% Glycerol
Storage instruction	For continuous use, store undiluted antibody at 2-8°C for up to a week. For long-term storage, aliquot and store at -20°C. Storage in frost free freezers is not recommended. Avoid repeated freeze/thaw cycles. Suggest spin the vial prior to opening. The antibody solution should be gently mixed before use.
Note	For laboratory research only, not for drug, diagnostic or other use.

Bioinformation

Gene Symbol	ITPKB
-------------	-------

Gene Full Name	inositol-trisphosphate 3-kinase B
Background	The protein encoded by this protein regulates inositol phosphate metabolism by phosphorylation of second messenger inositol 1,4,5-trisphosphate to Ins(1,3,4,5)P ₄ . The activity of this encoded protein is responsible for regulating the levels of a large number of inositol polyphosphates that are important in cellular signaling. Both calcium/calmodulin and protein phosphorylation mechanisms control its activity. [provided by RefSeq, Jul 2008]
Calculated Mw	102 kDa

Images



ARG40383 anti-ITPKB antibody WB image

Western blot: HeLa, SP2/O and H9C2 whole cell lysates stained with ARG40383 anti-ITPKB antibody.