

ARG40382 anti-ALDH3B2 antibody

Package: 100 µl
Store at: -20°C

Summary

Product Description	Rabbit Polyclonal antibody recognizes ALDH3B2
Tested Reactivity	Hu, Ms, Rat
Tested Application	WB
Host	Rabbit
Clonality	Polyclonal
Isotype	IgG
Target Name	ALDH3B2
Species	Human
Immunogen	KLH-conjugated synthetic peptide within the C-terminal region of Human ALDH3B2.
Conjugation	Un-conjugated
Alternate Names	Aldehyde dehydrogenase family 3 member B2; EC 1.2.1.5; ALDH8; Aldehyde dehydrogenase 8

Application Instructions

Application table	Application	Dilution
	WB	1:500 - 1:1000
Application Note	* The dilutions indicate recommended starting dilutions and the optimal dilutions or concentrations should be determined by the scientist.	
Observed Size	45 kDa	

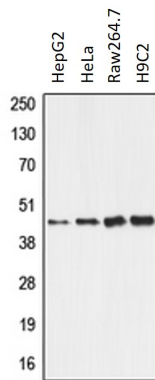
Properties

Form	Liquid
Purification	Affinity purification with immunogen.
Buffer	0.42% Potassium phosphate (pH 7.3), 0.87% NaCl, 0.01% Sodium azide and 30% Glycerol.
Preservative	0.01% Sodium azide
Stabilizer	30% Glycerol
Storage instruction	For continuous use, store undiluted antibody at 2-8°C for up to a week. For long-term storage, aliquot and store at -20°C. Storage in frost free freezers is not recommended. Avoid repeated freeze/thaw cycles. Suggest spin the vial prior to opening. The antibody solution should be gently mixed before use.
Note	For laboratory research only, not for drug, diagnostic or other use.

Bioinformation

Gene Symbol	ALDH3B2
Gene Full Name	aldehyde dehydrogenase 3 family, member B2
Background	This gene encodes a member of the aldehyde dehydrogenase family, a group of isozymes that may play a major role in the detoxification of aldehydes generated by alcohol metabolism and lipid peroxidation. The gene of this particular family member is over 10 kb in length. The expression of these transcripts is restricted to the salivary gland among the human tissues examined. Alternate transcriptional splice variants have been characterized. [provided by RefSeq, Jul 2008]
Calculated Mw	43 kDa
PTM	Geranylgeranylation is important for localization to lipid droplets and enzyme activity. [UniProt]

Images



ARG40382 anti-ALDH3B2 antibody WB image

Western blot: HepG2, HeLa, Raw264.7 and H9C2 whole cell lysates stained with ARG40382 anti-ALDH3B2 antibody.