

ARG40381 anti-SLC22A12 / URAT1 antibody

Package: 100 µl
Store at: -20°C

Summary

Product Description	Rabbit Polyclonal antibody recognizes SLC22A12 / URAT1
Tested Reactivity	Hu, Ms, Rat
Tested Application	WB
Host	Rabbit
Clonality	Polyclonal
Isotype	IgG
Target Name	SLC22A12 / URAT1
Species	Human
Immunogen	Recombinant full length protein of Human SLC22A12 / URAT1.
Conjugation	Un-conjugated
Alternate Names	Organic anion transporter 4-like protein; Urate anion exchanger 1; OAT4L; URAT1; Renal-specific transporter; Solute carrier family 22 member 12; RST

Application Instructions

Application table	Application	Dilution
	WB	1:500 - 1:2000
Application Note	* The dilutions indicate recommended starting dilutions and the optimal dilutions or concentrations should be determined by the scientist.	
Observed Size	70 kDa	

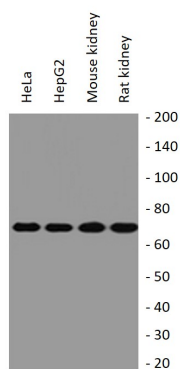
Properties

Form	Liquid
Purification	Affinity purification with immunogen.
Buffer	0.42% Potassium phosphate (pH 7.3), 0.87% NaCl, 0.01% Sodium azide and 30% Glycerol.
Preservative	0.01% Sodium azide
Stabilizer	30% Glycerol
Storage instruction	For continuous use, store undiluted antibody at 2-8°C for up to a week. For long-term storage, aliquot and store at -20°C. Storage in frost free freezers is not recommended. Avoid repeated freeze/thaw cycles. Suggest spin the vial prior to opening. The antibody solution should be gently mixed before use.
Note	For laboratory research only, not for drug, diagnostic or other use.

Bioinformation

Gene Symbol	SLC22A12
Gene Full Name	solute carrier family 22 (organic anion/urate transporter), member 12
Background	The protein encoded by this gene is a member of the organic anion transporter (OAT) family, and it acts as a urate transporter to regulate urate levels in blood. This protein is an integral membrane protein primarily found in epithelial cells of the proximal tubule of the kidney. An elevated level of serum urate, hyperuricemia, is associated with increased incidences of gout, and mutations in this gene cause renal hypouricemia type 1. Alternative splicing results in multiple transcript variants. [provided by RefSeq, Jan 2013]
Function	Required for efficient urate re-absorption in the kidney. Regulates blood urate levels. Mediates saturable urate uptake by facilitating the exchange of urate against organic anions. [UniProt]
Calculated Mw	60 kDa
Cellular Localization	Cell membrane; Multi-pass membrane protein. Note=Detected in the luminal membrane of the epithelium of renal proximal tubules. [UniProt]

Images



ARG40381 anti-SLC22A12 / URAT1 antibody WB image

Western blot: HeLa, HepG2, Mouse kidney and Rat kidney lysates stained with ARG40381 anti-SLC22A12 / URAT1 antibody.