

## ARG40364 anti-INSRR / IRR (alpha chain) antibody

Package: 100 µl  
Store at: -20°C

### Summary

Product Description	Rabbit Polyclonal antibody recognizes INSRR / IRR (alpha chain)
Tested Reactivity	Hu, Ms, Rat
Tested Application	IHC-P, WB
Host	Rabbit
Clonality	Polyclonal
Isotype	IgG
Target Name	INSRR / IRR (alpha chain)
Species	Human
Immunogen	KLH-conjugated synthetic peptide between aa. 27-57 of Human INSRR.
Conjugation	Un-conjugated
Alternate Names	Insulin receptor-related protein; IRR; EC 2.7.10.1; IR-related receptor; Insulin Receptor R

### Application Instructions

Application table	Application	Dilution
	IHC-P	1:10 - 1:50
	WB	1:1000
Application Note	* The dilutions indicate recommended starting dilutions and the optimal dilutions or concentrations should be determined by the scientist.	
Positive Control	SH-SY5Y	

### Properties

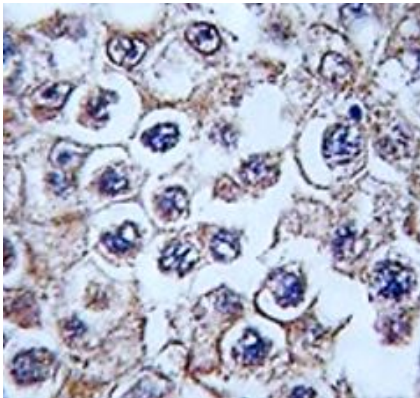
Form	Liquid
Purification	Purification with Protein A and immunogen peptide.
Buffer	PBS and 0.09% (W/V) Sodium azide.
Preservative	0.09% (W/V) Sodium azide.
Storage instruction	For continuous use, store undiluted antibody at 2-8°C for up to a week. For long-term storage, aliquot and store at -20°C or below. Storage in frost free freezers is not recommended. Avoid repeated freeze/thaw cycles. Suggest spin the vial prior to opening. The antibody solution should be gently mixed before use.
Note	For laboratory research only, not for drug, diagnostic or other use.

### Bioinformation

Gene Symbol	INSRR
Gene Full Name	insulin receptor-related receptor
Function	Receptor with tyrosine-protein kinase activity. Functions as a pH sensing receptor which is activated by increased extracellular pH. Activates an intracellular signaling pathway that involves IRS1 and AKT1/PKB. [UniProt]
Calculated Mw	144 kDa
PTM	Autophosphorylated on tyrosine residues between pH 7.9 and pH 10.5. [UniProt]
Cellular Localization	Membrane; Single-pass type I membrane protein. [UniProt]

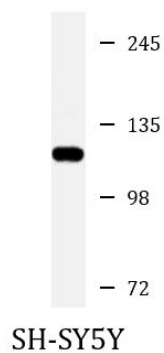
## Images

---



ARG40364 anti-INSRR / IRR (alpha chain) antibody IHC-P image

Immunohistochemistry: Formalin-fixed and paraffin-embedded Human testis stained with ARG40364 anti-INSRR / IRR (alpha chain) antibody.



ARG40364 anti-INSRR / IRR (alpha chain) antibody WB image

Western blot: 20 µg of SH-SY5Y whole cell lysate stained with ARG40364 anti-INSRR / IRR (alpha chain) antibody at 1:2000 dilution.