

ARG40363 anti-MAN2C1 antibody

Package: 100 µl
Store at: -20°C

Summary

Product Description	Rabbit Polyclonal antibody recognizes MAN2C1
Tested Reactivity	Hu
Tested Application	WB
Host	Rabbit
Clonality	Polyclonal
Isotype	IgG
Target Name	MAN2C1
Species	Human
Immunogen	KLH-conjugated synthetic peptide between aa. 113-142 of Human MAN2C1.
Conjugation	Un-conjugated
Alternate Names	EC 3.2.1.24; MAN6A8; MANA1; Mannosidase alpha class 2C member 1; MANA; Alpha-D-mannoside mannohydrolase; Alpha-mannosidase 2C1; Alpha mannosidase 6A8B

Application Instructions

Application table	Application	Dilution
	WB	1:1000
Application Note	* The dilutions indicate recommended starting dilutions and the optimal dilutions or concentrations should be determined by the scientist.	
Positive Control	HepG2	

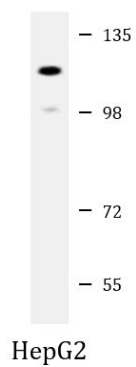
Properties

Form	Liquid
Purification	Purification with Protein A and immunogen peptide.
Buffer	PBS and 0.09% (W/V) Sodium azide.
Preservative	0.09% (W/V) Sodium azide.
Storage instruction	For continuous use, store undiluted antibody at 2-8°C for up to a week. For long-term storage, aliquot and store at -20°C or below. Storage in frost free freezers is not recommended. Avoid repeated freeze/thaw cycles. Suggest spin the vial prior to opening. The antibody solution should be gently mixed before use.
Note	For laboratory research only, not for drug, diagnostic or other use.

Bioinformation

Gene Symbol	MAN2C1
Gene Full Name	mannosidase, alpha, class 2C, member 1
Calculated Mw	116 kDa
Cellular Localization	Cytoplasm. [UniProt]

Images



ARG40363 anti-MAN2C1 antibody WB image

Western blot: 20 µg of HepG2 whole cell lysate stained with ARG40363 anti-MAN2C1 antibody at 1:1000 dilution.