

ARG40362 anti-ITIH1 antibody

Package: 100 µl
Store at: -20°C

Summary

Product Description	Rabbit Polyclonal antibody recognizes ITIH1
Tested Reactivity	Hu
Tested Application	FACS, WB
Host	Rabbit
Clonality	Polyclonal
Isotype	IgG
Target Name	ITIH1
Species	Human
Immunogen	KLH-conjugated synthetic peptide between aa. 606-635 of Human ITIH1.
Conjugation	Un-conjugated
Alternate Names	ITIH; Inter-alpha-trypsin inhibitor complex component III; SHAP; Inter-alpha-inhibitor heavy chain 1; Serum-derived hyaluronan-associated protein; H1P; ITI-HC1; Inter-alpha-trypsin inhibitor heavy chain H1; IATIH; ITI heavy chain H1; IGHEP1

Application Instructions

Application table	Application	Dilution
	FACS	1:10 - 1:50
	WB	1:1000
Application Note	* The dilutions indicate recommended starting dilutions and the optimal dilutions or concentrations should be determined by the scientist.	
Positive Control	Human plasma	

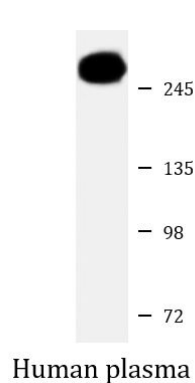
Properties

Form	Liquid
Purification	Purification with Protein A and immunogen peptide.
Buffer	PBS and 0.09% (W/V) Sodium azide.
Preservative	0.09% (W/V) Sodium azide.
Storage instruction	For continuous use, store undiluted antibody at 2-8°C for up to a week. For long-term storage, aliquot and store at -20°C or below. Storage in frost free freezers is not recommended. Avoid repeated freeze/thaw cycles. Suggest spin the vial prior to opening. The antibody solution should be gently mixed before use.
Note	For laboratory research only, not for drug, diagnostic or other use.

Bioinformation

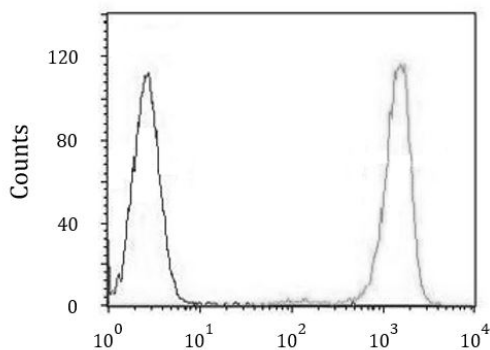
Gene Symbol	ITIH1
Gene Full Name	inter-alpha-trypsin inhibitor heavy chain 1
Background	The protein encoded by this gene is the heavy chain of a serine protease inhibitor that may serve to carry hyaluronan in plasma. This gene is part of a cluster of similar genes on chromosome 3. Multiple transcript variants encoding different isoforms have been found for this gene. [provided by RefSeq, Oct 2009]
Function	May act as a carrier of hyaluronan in serum or as a binding protein between hyaluronan and other matrix protein, including those on cell surfaces in tissues to regulate the localization, synthesis and degradation of hyaluronan which are essential to cells undergoing biological processes. Contains a potential peptide which could stimulate a broad spectrum of phagocytotic cells. [UniProt]
Calculated Mw	101 kDa
PTM	Heavy chains are linked to bikunin via chondroitin 4-sulfate esterified to the alpha-carboxyl of the C-terminal aspartate after propeptide cleavage. The S-linked glycan is composed of two 6-carbon sugars, possibly Glc or Gal. [UniProt]
Cellular Localization	Secreted. [UniProt]

Images



ARG40362 anti-ITIH1 antibody WB image

Western blot: 20 µg of Human plasma lysate stained with ARG40362 anti-ITIH1 antibody at 1:1000 dilution.



ARG40362 anti-ITIH1 antibody FACS image

Flow Cytometry: HL-60 cells stained with ARG40362 anti-ITIH1 antibody (right histogram) or without primary antibody as control (left histogram), followed by incubation with FITC labelled secondary antibody.