

ARG40345 anti-ITPK1 antibody

Package: 100 µl
Store at: -20°C

Summary

Product Description	Rabbit Polyclonal antibody recognizes ITPK1
Tested Reactivity	Hu, Ms, Rat
Tested Application	WB
Host	Rabbit
Clonality	Polyclonal
Isotype	IgG
Target Name	ITPK1
Species	Human
Immunogen	Recombinant fusion protein corresponding to aa. 185-414 of Human ITPK1 (NP_055031.2).
Conjugation	Un-conjugated
Alternate Names	1,3,4; EC 2.7.1.159; Inositol 1,3,4-trisphosphate 5/6-kinase; Inositol-triphosphate 5/6-kinase; 3; Ins; Inositol-tetrakisphosphate 1-kinase; EC 2.7.1.134; ITRPK1

Application Instructions

Application table	Application	Dilution
	WB	1:500 - 1:2000
Application Note	* The dilutions indicate recommended starting dilutions and the optimal dilutions or concentrations should be determined by the scientist.	
Positive Control	Rat brain, Mouse brain and HeLa	
Observed Size	43 kDa	

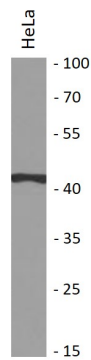
Properties

Form	Liquid
Purification	Affinity purified.
Buffer	PBS (pH 7.3), 0.02% Sodium azide and 50% Glycerol.
Preservative	0.02% Sodium azide
Stabilizer	50% Glycerol
Storage instruction	For continuous use, store undiluted antibody at 2-8°C for up to a week. For long-term storage, aliquot and store at -20°C. Storage in frost free freezers is not recommended. Avoid repeated freeze/thaw cycles. Suggest spin the vial prior to opening. The antibody solution should be gently mixed before use.
Note	For laboratory research only, not for drug, diagnostic or other use.

Bioinformation

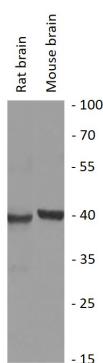
Gene Symbol	ITPK1
Gene Full Name	inositol-tetrakisphosphate 1-kinase
Function	Kinase that can phosphorylate various inositol polyphosphate such as Ins(3,4,5,6)P4 or Ins(1,3,4)P3. Phosphorylates Ins(3,4,5,6)P4 at position 1 to form Ins(1,3,4,5,6)P5. This reaction is thought to have regulatory importance, since Ins(3,4,5,6)P4 is an inhibitor of plasma membrane Ca(2+)-activated Cl(-) channels, while Ins(1,3,4,5,6)P5 is not. Also phosphorylates Ins(1,3,4)P3 on O-5 and O-6 to form Ins(1,3,4,6)P4, an essential molecule in the hexakisphosphate (InsP6) pathway. Also acts as an inositol polyphosphate phosphatase that dephosphorylate Ins(1,3,4,5)P4 and Ins(1,3,4,6)P4 to Ins(1,3,4)P3, and Ins(1,3,4,5,6)P5 to Ins(3,4,5,6)P4. May also act as an isomerase that interconverts the inositol tetrakisphosphate isomers Ins(1,3,4,5)P4 and Ins(1,3,4,6)P4 in the presence of ADP and magnesium. Probably acts as the rate-limiting enzyme of the InsP6 pathway. Modifies TNF-alpha-induced apoptosis by interfering with the activation of TNFRSF1A-associated death domain. [UniProt]
Calculated Mw	46 kDa
PTM	Acetylation by EP300 and CREBBP destabilizes ITPK1, and down-regulates enzymatic activity. Deacetylated by SIRT1. [UniProt]

Images



ARG40345 anti-ITPK1 antibody WB image

Western blot: 25 µg of HeLa cell lysate stained with ARG40345 anti-ITPK1 antibody at 1:1000 dilution.



ARG40345 anti-ITPK1 antibody WB image

Western blot: 25 µg of Rat brain and Mouse brain lysates stained with ARG40345 anti-ITPK1 antibody at 1:1000 dilution.