

## ARG40325 anti-Calpain 2 antibody

Package: 50 µl  
Store at: -20°C

### Summary

Product Description	Rabbit Polyclonal antibody recognizes Calpain 2
Tested Reactivity	Hu, Ms, Rat
Tested Application	IHC-P, WB
Host	Rabbit
Clonality	Polyclonal
Isotype	IgG
Target Name	Calpain 2
Species	Human
Immunogen	Recombinant fusion protein corresponding to aa. 350-680 of Human Calpain 2 (NP_001739.2).
Conjugation	Un-conjugated
Alternate Names	CANP2; Calpain-2 large subunit; Calpain-2 catalytic subunit; EC 3.4.22.53; Millimolar-calpain; M-calpain; mCANP; Calpain large polypeptide L2; Calpain M-type; CANP 2; CANPL2; CANPml; Calcium-activated neutral proteinase 2

### Application Instructions

Application table	Application	Dilution
	IHC-P	1:50 - 1:200
	WB	1:500 - 1:2000
Application Note	* The dilutions indicate recommended starting dilutions and the optimal dilutions or concentrations should be determined by the scientist.	
Positive Control	Mouse kidney and H460	
Observed Size	~ 80 kDa	

### Properties

Form	Liquid
Purification	Affinity purified.
Buffer	PBS (pH 7.3), 0.02% Sodium azide and 50% Glycerol.
Preservative	0.02% Sodium azide
Stabilizer	50% Glycerol
Storage instruction	For continuous use, store undiluted antibody at 2-8°C for up to a week. For long-term storage, aliquot and store at -20°C. Storage in frost free freezers is not recommended. Avoid repeated freeze/thaw cycles. Suggest spin the vial prior to opening. The antibody solution should be gently mixed before use.

**Note**

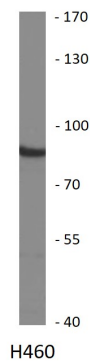
For laboratory research only, not for drug, diagnostic or other use.

## Bioinformation

---

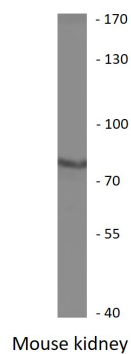
Gene Symbol	CAPN2
Gene Full Name	calpain 2, (m/II) large subunit
Background	The calpains, calcium-activated neutral proteases, are nonlysosomal, intracellular cysteine proteases. The mammalian calpains include ubiquitous, stomach-specific, and muscle-specific proteins. The ubiquitous enzymes consist of heterodimers with distinct large, catalytic subunits associated with a common small, regulatory subunit. This gene encodes the large subunit of the ubiquitous enzyme, calpain 2. Multiple heterogeneous transcriptional start sites in the 5' UTR have been reported. Two transcript variants encoding different isoforms have been found for this gene. [provided by RefSeq, Mar 2009]
Function	Calcium-regulated non-lysosomal thiol-protease which catalyze limited proteolysis of substrates involved in cytoskeletal remodeling and signal transduction. Proteolytically cleaves MYOC at 'Arg-226'. [UniProt]
Calculated Mw	80 kDa
Cellular Localization	Cytoplasm. Cell membrane. Note=Translocates to the plasma membrane upon Ca(2+) binding. [UniProt]

## Images



ARG40325 anti-Calpain 2 antibody WB image

Western blot: 25 µg of H460 cell lysate stained with ARG40325 anti-Calpain 2 antibody at 1:1000 dilution.



ARG40325 anti-Calpain 2 antibody WB image

Western blot: 25 µg of Mouse kidney lysate stained with ARG40325 anti-Calpain 2 antibody at 1:1000 dilution.