

ARG40265 anti-ADCY2 antibody

Package: 100 µl
Store at: -20°C

Summary

Product Description	Rabbit Polyclonal antibody recognizes ADCY2
Tested Reactivity	Hu
Predict Reactivity	Ms, Rat
Tested Application	FACS, WB
Host	Rabbit
Clonality	Polyclonal
Isotype	IgG
Target Name	ADCY2
Species	Human
Immunogen	KLH-conjugated synthetic peptide corresponding to aa. 451-481 of Human ADCY2.
Conjugation	Un-conjugated
Alternate Names	Adenylate cyclase type II; Adenylate cyclase type 2; AC2; ATP pyrophosphate-lyase 2; Adenylyl cyclase 2; EC 4.6.1.1; HBAC2

Application Instructions

Application table	Application	Dilution
	FACS	1:10 - 1:50
	WB	1:1000
Application Note	* The dilutions indicate recommended starting dilutions and the optimal dilutions or concentrations should be determined by the scientist.	
Positive Control	Jurkat	
Observed Size	~ 120 kDa	

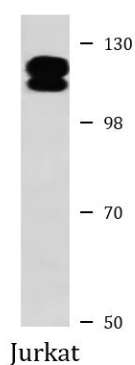
Properties

Form	Liquid
Purification	Saturated Ammonium Sulfate (SAS) precipitation followed by dialysis against PBS.
Buffer	PBS and 0.09% (W/V) Sodium azide.
Preservative	0.09% (W/V) Sodium azide
Storage instruction	For continuous use, store undiluted antibody at 2-8°C for up to a week. For long-term storage, aliquot and store at -20°C or below. Storage in frost free freezers is not recommended. Avoid repeated freeze/thaw cycles. Suggest spin the vial prior to opening. The antibody solution should be gently mixed before use.

Bioinformation

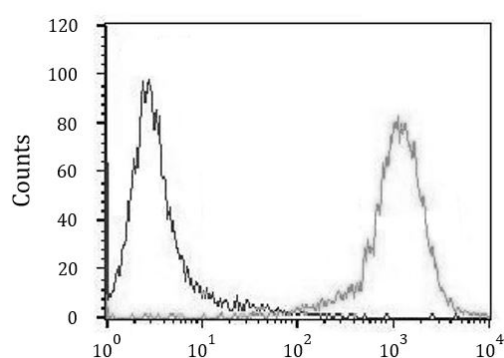
Gene Symbol	ADCY2
Gene Full Name	adenylate cyclase 2 (brain)
Background	This gene encodes a member of the family of adenylate cyclases, which are membrane-associated enzymes that catalyze the formation of the secondary messenger cyclic adenosine monophosphate (cAMP). This enzyme is insensitive to Ca(2+)/calmodulin, and is stimulated by the G protein beta and gamma subunit complex. [provided by RefSeq, Jul 2008]
Function	This is a membrane-bound, calmodulin-insensitive adenylyl cyclase. [UniProt]
Calculated Mw	124 kDa
PTM	Phosphorylated by RAF1. [UniProt]
Cellular Localization	Membrane; Multi-pass membrane protein. Cell membrane; Multi-pass membrane protein. Cytoplasm. [UniProt]

Images



ARG40265 anti-ADCY2 antibody WB image

Western blot: 35 µg of Jurkat cell lysate stained with ARG40265 anti-ADCY2 antibody.



ARG40265 anti-ADCY2 antibody FACS image

Flow Cytometry: Jurkat cells stained with ARG40265 anti-ADCY2 antibody (right histogram) or without primary antibody as control (left histogram), followed by incubation with FITC labelled secondary antibody.