

ARG40264 anti-SLC44A4 antibody

Package: 100 µl
Store at: -20°C

Summary

Product Description	Rabbit Polyclonal antibody recognizes SLC44A4
Tested Reactivity	Hu, Ms
Tested Application	WB
Host	Rabbit
Clonality	Polyclonal
Isotype	IgG
Target Name	SLC44A4
Species	Human
Immunogen	Recombinant fusion protein corresponding to aa. 65-215 of Human SLC44A4 (NP_079533.2).
Conjugation	Un-conjugated
Alternate Names	CTL4; Choline transporter-like protein 4; NG22; TPPT; C6orf29; Solute carrier family 44 member 4

Application Instructions

Application table	Application	Dilution
	WB	1:500 - 1:2000
Application Note	* The dilutions indicate recommended starting dilutions and the optimal dilutions or concentrations should be determined by the scientist.	
Positive Control	Mouse lung	
Observed Size	~ 79 kDa	

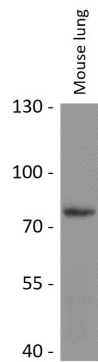
Properties

Form	Liquid
Purification	Affinity purified.
Buffer	PBS (pH 7.3), 0.02% Sodium azide and 50% Glycerol.
Preservative	0.02% Sodium azide
Stabilizer	50% Glycerol
Storage instruction	For continuous use, store undiluted antibody at 2-8°C for up to a week. For long-term storage, aliquot and store at -20°C. Storage in frost free freezers is not recommended. Avoid repeated freeze/thaw cycles. Suggest spin the vial prior to opening. The antibody solution should be gently mixed before use.
Note	For laboratory research only, not for drug, diagnostic or other use.

Bioinformation

Gene Symbol	SLC44A4
Gene Full Name	solute carrier family 44, member 4
Background	The protein encoded by this gene may be a sodium-dependent transmembrane transport protein involved in the uptake of choline by cholinergic neurons. Defects in this gene can cause sialidosis, a lysosomal storage disease. Three transcript variants encoding different isoforms have been found for this gene. [provided by RefSeq, May 2010]
Calculated Mw	79 kDa
Cellular Localization	Membrane; Multi-pass membrane protein. Apical cell membrane. [UniProt]

Images



ARG40264 anti-SLC44A4 antibody WB image

Western blot: 25 µg of Mouse lung lysate stained with ARG40264 anti-SLC44A4 antibody at 1:1000 dilution.