

ARG40254 anti-GFP antibody

Package: 100 µl
Store at: -20°C

Summary

Product Description	Rabbit Polyclonal antibody recognizes GFP
Tested Reactivity	Other
Tested Application	ICC/IF, IHC-P, WB
Host	Rabbit
Clonality	Polyclonal
Isotype	IgG
Target Name	GFP
Species	Others
Immunogen	Recombinant protein of GFP.
Conjugation	Un-conjugated

Application Instructions

Application table	Application	Dilution
	ICC/IF	1:50 - 1:100
	IHC-P	1:50 - 1:200
	WB	1:2000 - 1:3000
Application Note	* The dilutions indicate recommended starting dilutions and the optimal dilutions or concentrations should be determined by the scientist.	

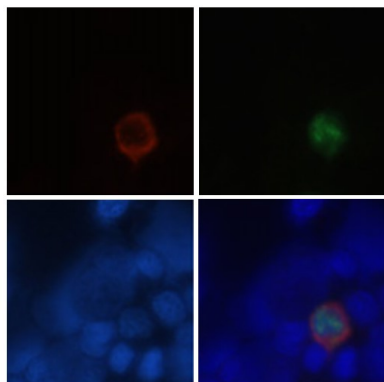
Properties

Form	Liquid
Purification	Affinity purified.
Buffer	PBS (pH 7.3), 0.02% Sodium azide and 50% Glycerol.
Preservative	0.02% Sodium azide
Stabilizer	50% Glycerol
Storage instruction	For continuous use, store undiluted antibody at 2-8°C for up to a week. For long-term storage, aliquot and store at -20°C. Storage in frost free freezers is not recommended. Avoid repeated freeze/thaw cycles. Suggest spin the vial prior to opening. The antibody solution should be gently mixed before use.
Note	For laboratory research only, not for drug, diagnostic or other use.

Bioinformation

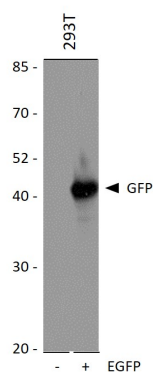
Gene Full Name Green fluorescent protein
Research Area Controls and Markers antibody; Tag Internal Control antibody; Fluorescent-Tags antibody

Images



ARG40254 anti-GFP antibody ICC/IF image

Immunofluorescence: GFP transgenic 293T cells stained with ARG40254 anti-GFP antibody (red). GFP (green) expression. DAPI (blue) for nuclear staining.



ARG40254 anti-GFP antibody WB image

Western blot: 25 μ g of 293T cells untransfected or transfected with EGFP, using ARG40254 anti-GFP antibody at 1:1000 dilution.