

ARG40244 anti-CHAC1 antibody

Package: 100 µl
Store at: -20°C

Summary

Product Description	Rabbit Polyclonal antibody recognizes CHAC1
Tested Reactivity	Hu, Ms, Rat
Tested Application	WB
Host	Rabbit
Clonality	Polyclonal
Isotype	IgG
Target Name	CHAC1
Species	Human
Immunogen	KLH-conjugated synthetic peptide within the N-terminal region of Human CHAC1.
Conjugation	Un-conjugated
Alternate Names	Botch; Gamma-GCG 1; Glutathione-specific gamma-glutamylcyclotransferase 1; Cation transport regulator-like protein 1; EC 2.3.2.-; Blocks Notch protein

Application Instructions

Application table	Application	Dilution
	WB	1:500 - 1:1000
Application Note	* The dilutions indicate recommended starting dilutions and the optimal dilutions or concentrations should be determined by the scientist.	
Observed Size	~ 24 kDa	

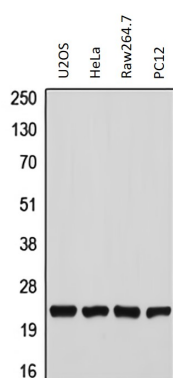
Properties

Form	Liquid
Purification	Affinity purification with immunogen.
Buffer	0.42% Potassium phosphate (pH 7.3), 0.87% NaCl, 0.01% Sodium azide and 30% Glycerol.
Preservative	0.01% Sodium azide
Stabilizer	30% Glycerol
Storage instruction	For continuous use, store undiluted antibody at 2-8°C for up to a week. For long-term storage, aliquot and store at -20°C. Storage in frost free freezers is not recommended. Avoid repeated freeze/thaw cycles. Suggest spin the vial prior to opening. The antibody solution should be gently mixed before use.
Note	For laboratory research only, not for drug, diagnostic or other use.

Bioinformation

Gene Symbol	CHAC1
Gene Full Name	ChaC glutathione-specific gamma-glutamylcyclotransferase 1
Function	Catalyzes the cleavage glutathione into 5-oxoproline and a Cys-Gly dipeptide. Acts specifically on glutathione, but not on other gamma-glutamyl peptides. Glutathione depletion is an important factor for apoptosis initiation and execution. Acts as a pro-apoptotic component of the unfolded protein response pathway by mediating the pro-apoptotic effects of the ATF4-ATF3-DDIT3/CHOP cascade. Negative regulator of Notch signaling pathway involved in embryonic neurogenesis: acts by inhibiting Notch cleavage by furin, maintaining Notch in an immature inactive form, thereby promoting neurogenesis in embryos. [UniProt]
Calculated Mw	24 kDa
Cellular Localization	Cytoplasm, cytosol. Golgi apparatus, trans-Golgi network. [UniProt]

Images



ARG40244 anti-CHAC1 antibody WB image

Western blot: U2OS, HeLa, Raw264.7 and PC12 whole cell lysates stained with ARG40244 anti-CHAC1 antibody.