

ARG40241 anti-FOXRED2 antibody

Package: 50 µg
Store at: -20°C

Summary

Product Description	Rabbit Polyclonal antibody recognizes FOXRED2
Tested Reactivity	Hu
Tested Application	ICC/IF, WB
Host	Rabbit
Clonality	Polyclonal
Isotype	IgG
Target Name	FOXRED2
Species	Human
Immunogen	A 17 amino acid peptide within aa. 70 - 120 of Human FOXRED2.
Conjugation	Un-conjugated
Alternate Names	Endoplasmic reticulum flavoprotein associated with degradation; FAD-dependent oxidoreductase domain-containing protein 2; ERFAD

Application Instructions

Application table	Application	Dilution
	ICC/IF	20 µg/ml
	WB	1 µg/ml
Application Note	* The dilutions indicate recommended starting dilutions and the optimal dilutions or concentrations should be determined by the scientist.	
Positive Control	Human lung	
Observed Size	~ 70 kDa	

Properties

Form	Liquid
Purification	Affinity purification with immunogen.
Buffer	PBS and 0.02% Sodium azide
Preservative	0.02% Sodium azide
Concentration	1 mg/ml
Storage instruction	For continuous use, store undiluted antibody at 2-8°C for up to a week. For long-term storage, aliquot and store at -20°C or below. Storage in frost free freezers is not recommended. Avoid repeated freeze/thaw cycles. Suggest spin the vial prior to opening. The antibody solution should be gently mixed before use.

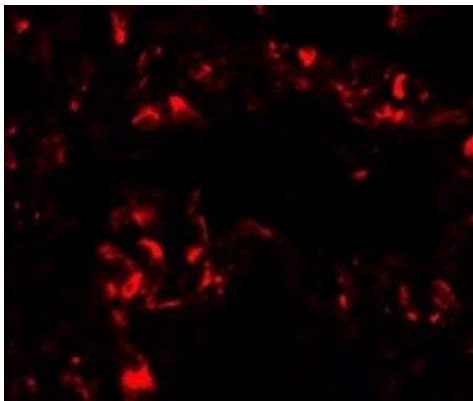
Note

For laboratory research only, not for drug, diagnostic or other use.

Bioinformation

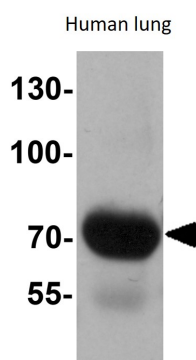
Gene Symbol	FOXRED2
Gene Full Name	FAD-dependent oxidoreductase domain containing 2
Function	Probable flavoprotein which may function in endoplasmic reticulum associated degradation (ERAD). May bind non-native proteins in the endoplasmic reticulum and target them to the ubiquitination machinery for subsequent degradation. [UniProt]
Calculated Mw	78 kDa
PTM	N-glycosylated. [UniProt]
Cellular Localization	Endoplasmic reticulum lumen. [UniProt]

Images



ARG40241 anti-FOXRED2 antibody ICC/IF image

Immunofluorescence: Human lung cells stained with ARG40241 anti-FOXRED2 antibody at 20 µg/ml dilution.



ARG40241 anti-FOXRED2 antibody WB image

Western blot: Human lung tissue lysate stained with ARG40241 anti-FOXRED2 antibody at 1 µg/ml dilution.