

ARG40205 anti-CD23 antibody

Package: 50 µg
Store at: -20°C

Summary

Product Description	Rabbit Polyclonal antibody recognizes CD23
Tested Reactivity	Hu, Ms, Rat
Tested Application	FACS, IHC-Fr, IHC-P, WB
Host	Rabbit
Clonality	Polyclonal
Isotype	IgG
Target Name	CD23
Species	Mouse
Immunogen	Recombinant protein corresponding to E50-P331 of Mouse CD23.
Conjugation	Un-conjugated
Alternate Names	CD23A; BLAST-2; Lymphocyte IgE receptor; CLEC4J; Immunoglobulin E-binding factor; CD23; IGEBF; Fc-epsilon-RII; CD antigen CD23; FCE2; Low affinity immunoglobulin epsilon Fc receptor; C-type lectin domain family 4 member J

Application Instructions

Application table	Application	Dilution
	FACS	1 - 3 µg/10 ⁶ cells
	IHC-Fr	1:200 - 1:1000
	IHC-P	0.5 - 1 µg/ml
	WB	0.1 - 0.5 µg/ml

Application Note IHC-P: Antigen Retrieval: Heat mediation was performed in Citrate buffer (pH 6.0) for 20 min.
* The dilutions indicate recommended starting dilutions and the optimal dilutions or concentrations should be determined by the scientist.

Properties

Form	Liquid
Purification	Affinity purification with immunogen.
Buffer	0.9% NaCl, 0.2% Na ₂ HPO ₄ , 0.05% Sodium azide and 5% BSA.
Preservative	0.05% Sodium azide
Stabilizer	5% BSA
Concentration	0.5 mg/ml
Storage instruction	For continuous use, store undiluted antibody at 2-8°C for up to a week. For long-term storage, aliquot and store at -20°C or below. Storage in frost free freezers is not recommended. Avoid repeated

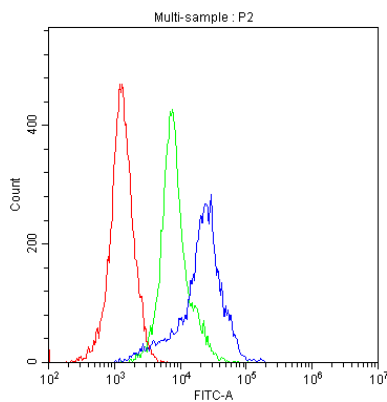
freeze/thaw cycles. Suggest spin the vial prior to opening. The antibody solution should be gently mixed before use.

Note For laboratory research only, not for drug, diagnostic or other use.

Bioinformation

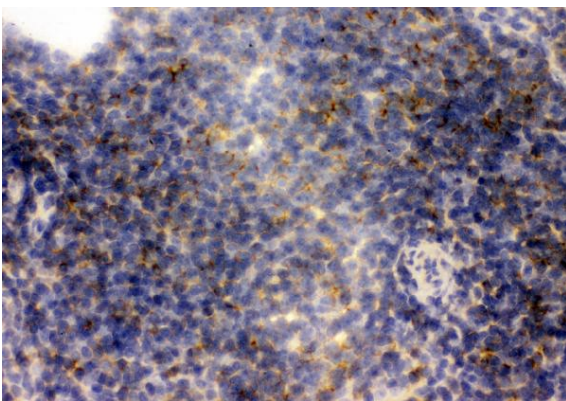
Gene Symbol	FCER2
Gene Full Name	Fc fragment of IgE, low affinity II, receptor for (CD23)
Background	The protein encoded by this gene is a B-cell specific antigen, and a low-affinity receptor for IgE. It has essential roles in B cell growth and differentiation, and the regulation of IgE production. This protein also exists as a soluble secreted form, then functioning as a potent mitogenic growth factor. Alternatively spliced transcript variants encoding different isoforms have been described for this gene.[provided by RefSeq, Jul 2011]
Function	Low-affinity receptor for immunoglobulin E (IgE) and CR2/CD21. Has essential roles in the regulation of IgE production and in the differentiation of B-cells (it is a B-cell-specific antigen). [UniProt]
Calculated Mw	36 kDa
PTM	N- and O-glycosylated. The secreted form sCD23 is produced by ADAM10-mediated ectodomain shedding. [UniProt]
Cellular Localization	Cell membrane; Single-pass type II membrane protein. Cell membrane; Lipid-anchor. Secreted. Note=Also exists as a soluble excreted form, sCD23. [UniProt]

Images



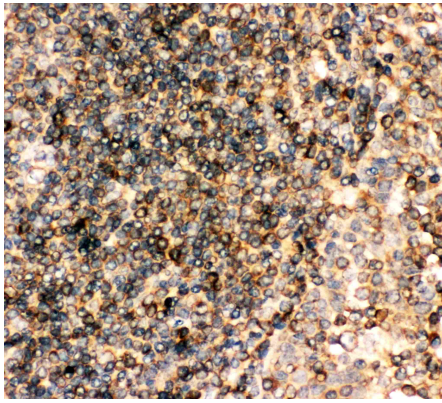
ARG40205 anti-CD23 antibody FACS image

Flow Cytometry: H-PBMC cells were blocked with 10% normal goat serum and then stained with ARG40205 anti-CD23 antibody (blue) at 1 µg/10⁶ cells for 30 min at 20°C, followed by DyLight®488 labelled secondary antibody. Isotype control antibody (green) was Rabbit IgG (1 µg/10⁶ cells) used under the same conditions. Unlabelled sample (red) was also used as a control.



ARG40205 anti-CD23 antibody IHC-Fr image

Immunohistochemistry: Frozen section of Mouse spleen tissue. The tissue section was blocked with 10% goat serum. The tissue section was then stained with ARG40205 anti-CD23 antibody at 1 µg/ml dilution, overnight at 4°C.



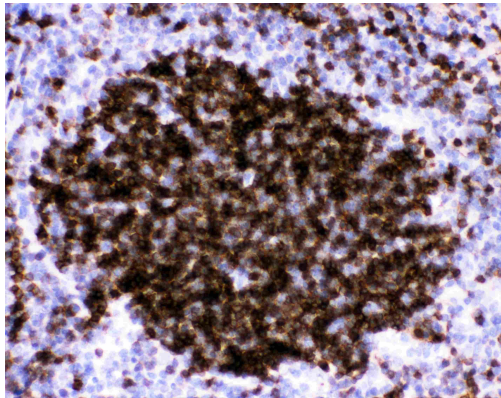
ARG40205 anti-CD23 antibody IHC-P image

Immunohistochemistry: Paraffin-embedded Human tonsil tissue. Antigen Retrieval: Heat mediation was performed in Citrate buffer (pH 6.0, epitope retrieval solution) for 20 min. The tissue section was blocked with 10% goat serum. The tissue section was then stained with ARG40205 anti-CD23 antibody at 1 μ g/ml, overnight at 4°C.



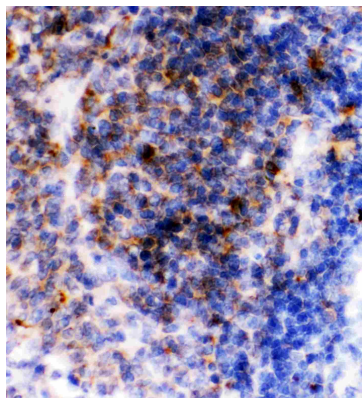
ARG40205 anti-CD23 antibody WB image

Western blot: 50 μ g of sample under reducing conditions. Mouse liver lysate stained with ARG40205 anti-CD23 antibody at 0.5 μ g/ml, overnight at 4°C.



ARG40205 anti-CD23 antibody IHC-P image

Immunohistochemistry: Paraffin-embedded Mouse spleen tissue. Antigen Retrieval: Heat mediation was performed in Citrate buffer (pH 6.0, epitope retrieval solution) for 20 min. The tissue section was blocked with 10% goat serum. The tissue section was then stained with ARG40205 anti-CD23 antibody at 1 μ g/ml, overnight at 4°C.



ARG40205 anti-CD23 antibody IHC-P image

Immunohistochemistry: Paraffin-embedded Rat spleen tissue. Antigen Retrieval: Heat mediation was performed in Citrate buffer (pH 6.0, epitope retrieval solution) for 20 min. The tissue section was blocked with 10% goat serum. The tissue section was then stained with ARG40205 anti-CD23 antibody at 1 μ g/ml, overnight at 4°C.