

ARG40204 anti-CD20 antibody

Package: 50 µg
Store at: -20°C

Summary

Product Description	Rabbit Polyclonal antibody recognizes CD20
Tested Reactivity	Hu
Tested Application	FACS, IHC-P, WB
Host	Rabbit
Clonality	Polyclonal
Isotype	IgG
Target Name	CD20
Species	Human
Immunogen	Recombinant protein corresponding to M1-D261 of Human CD20.
Conjugation	Un-conjugated
Alternate Names	Bp35; LEU-16; B-lymphocyte surface antigen B1; B-lymphocyte antigen CD20; CD20; S7; CD antigen CD20; Leukocyte surface antigen Leu-16; B1; CVID5; Membrane-spanning 4-domains subfamily A member 1; MS4A2

Application Instructions

Application table	Application	Dilution
	FACS	1 - 3 µg/10 ⁶ cells
	IHC-P	0.5 - 1 µg/ml
	WB	0.1 - 0.5 µg/ml

Application Note IHC-P: Antigen Retrieval: Heat mediation was performed in Citrate buffer (pH 6.0) for 20 min.
* The dilutions indicate recommended starting dilutions and the optimal dilutions or concentrations should be determined by the scientist.

Properties

Form	Liquid
Purification	Affinity purification with immunogen.
Buffer	0.9% NaCl, 0.2% Na ₂ HPO ₄ , 0.05% Sodium azide and 5% BSA.
Preservative	0.05% Sodium azide
Stabilizer	5% BSA
Concentration	0.5 mg/ml
Storage instruction	For continuous use, store undiluted antibody at 2-8°C for up to a week. For long-term storage, aliquot and store at -20°C or below. Storage in frost free freezers is not recommended. Avoid repeated freeze/thaw cycles. Suggest spin the vial prior to opening. The antibody solution should be gently mixed

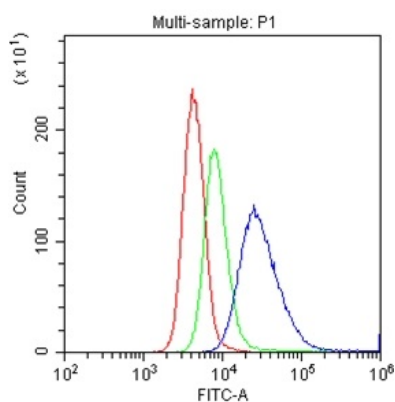
before use.

Note For laboratory research only, not for drug, diagnostic or other use.

Bioinformation

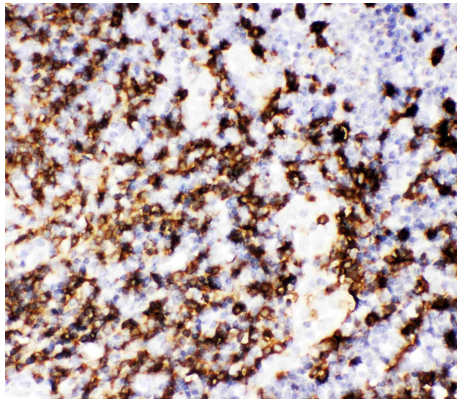
Gene Symbol	MS4A1
Gene Full Name	membrane-spanning 4-domains, subfamily A, member 1
Background	CD20 is a member of the membrane-spanning 4A gene family. Members of this nascent protein family are characterized by common structural features and similar intron/exon splice boundaries and display unique expression patterns among hematopoietic cells and nonlymphoid tissues. This gene encodes a B-lymphocyte surface molecule which plays a role in the development and differentiation of B-cells into plasma cells. This family member is localized to 11q12, among a cluster of family members. Alternative splicing of this gene results in two transcript variants which encode the same protein. [provided by RefSeq, Jul 2008]
Function	CD20 is a B-lymphocyte-specific membrane protein. It plays a role in the regulation of cellular calcium influx necessary for the development, differentiation, and activation of B-lymphocytes (PubMed:3925015, PubMed:7684739, PubMed:12920111). Functions as a store-operated calcium (SOC) channel component promoting calcium influx after activation by the B-cell receptor/BCR (PubMed:7684739, PubMed:12920111, PubMed:18474602). [UniProt]
Highlight	Related products: CD20 antibodies ; CD20 ELISA Kits ; CD20 Duos / Panels ; Anti-Rabbit IgG secondary antibodies ; Related news: New antibody panels and duos for Tumor immune microenvironment Tumor-Infiltrating Lymphocytes (TILs) Exploring Antiviral Immune Response
Research Area	Cancer antibody; Developmental Biology antibody; Immune System antibody; B cell Marker antibody; Immature B Cell Marker antibody; Inflammatory Cell Marker antibody; Tumor-infiltrating Lymphocyte Study antibody
Calculated Mw	33 kDa
PTM	Phosphorylated. Might be functionally regulated by protein kinase(s). [UniProt]
Cellular Localization	Cell membrane; Multi-pass membrane protein. Cell membrane; Lipid-anchor. [UniProt]

Images



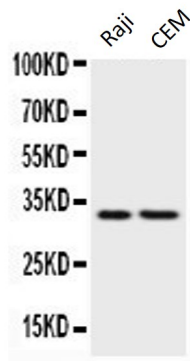
ARG40204 anti-CD20 antibody FACS image

Flow Cytometry: U937 cells were blocked with 10% normal goat serum and then stained with ARG40204 anti-CD20 antibody (blue) at 1 $\mu\text{g}/10^6$ cells for 30 min at 20°C, followed by DyLight[®]488 labelled secondary antibody. Isotype control antibody (green) was Rabbit IgG (1 $\mu\text{g}/10^6$ cells) used under the same conditions. Unlabelled sample (red) was also used as a control.



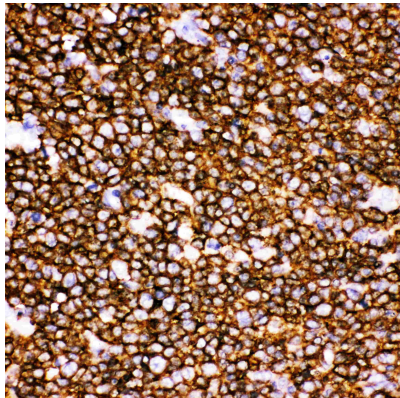
ARG40204 anti-CD20 antibody IHC-P image

Immunohistochemistry: Paraffin-embedded Human tonsil tissue. Antigen Retrieval: Heat mediation was performed in Citrate buffer (pH 6.0, epitope retrieval solution) for 20 min. The tissue section was blocked with 10% goat serum. The tissue section was then stained with ARG40204 anti-CD20 antibody at 1 $\mu\text{g}/\text{ml}$, overnight at 4°C.



ARG40204 anti-CD20 antibody WB image

Western blot: 50 μg of samples under reducing conditions. Raji and CEM whole cell lysates stained with ARG40204 anti-CD20 antibody at 0.5 $\mu\text{g}/\text{ml}$, overnight at 4°C.



ARG40204 anti-CD20 antibody IHC-P image

Immunohistochemistry: Paraffin-embedded Human tonsil tissue. Antigen Retrieval: Heat mediation was performed in Citrate buffer (pH 6.0, epitope retrieval solution) for 20 min. The tissue section was blocked with 10% goat serum. The tissue section was then stained with ARG40204 anti-CD20 antibody at 1 $\mu\text{g}/\text{ml}$, overnight at 4°C.