

## ARG40180 anti-YTHDF3 antibody

Package: 100 µl  
Store at: -20°C

### Summary

Product Description	Rabbit Polyclonal antibody recognizes YTHDF3
Tested Reactivity	Hu, Ms, Rat
Tested Application	ICC/IF, IHC-P, IP, WB
Host	Rabbit
Clonality	Polyclonal
Isotype	IgG
Target Name	YTHDF3
Species	Human
Immunogen	Recombinant fusion protein corresponding to aa. 1-275 of Human YTHDF3 (NP_689971.4).
Conjugation	Un-conjugated
Alternate Names	YTH domain-containing family protein 3

### Application Instructions

Application table	Application	Dilution
	ICC/IF	1:50 - 1:200
	IHC-P	1:50 - 1:200
	IP	1:50 - 1:200
	WB	1:500 - 1:2000
Application Note	* The dilutions indicate recommended starting dilutions and the optimal dilutions or concentrations should be determined by the scientist.	
Positive Control	HepG2	
Observed Size	64 kDa	

### Properties

Form	Liquid
Purification	Affinity purified.
Buffer	PBS (pH 7.3), 0.02% Sodium azide and 50% Glycerol.
Preservative	0.02% Sodium azide
Stabilizer	50% Glycerol
Storage instruction	For continuous use, store undiluted antibody at 2-8°C for up to a week. For long-term storage, aliquot and store at -20°C. Storage in frost free freezers is not recommended. Avoid repeated freeze/thaw cycles. Suggest spin the vial prior to opening. The antibody solution should be gently mixed before use.

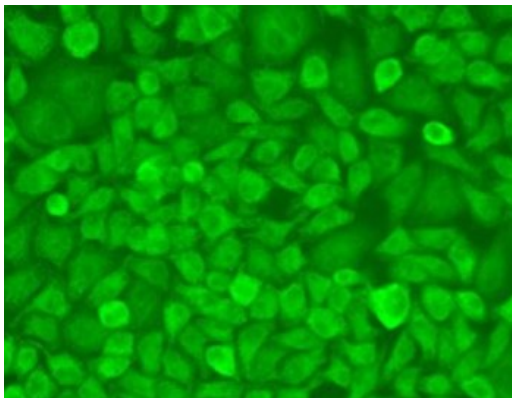
Note For laboratory research only, not for drug, diagnostic or other use.

## Bioinformation

---

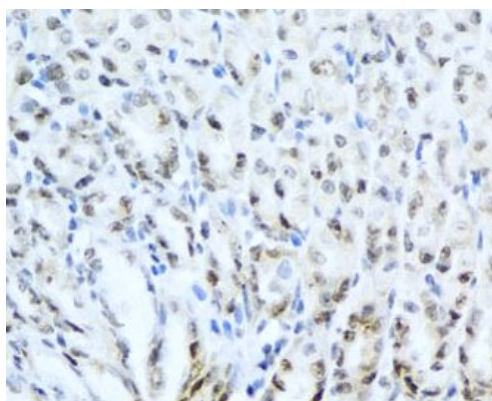
Gene Symbol	YTHDF3
Gene Full Name	YTH N(6)-methyladenosine RNA binding protein 3
Background	This gene encodes a member of the YTH (YT521-B homology) domain protein family. The YTH domain is common in eukaryotes, is often found in the middle of the protein sequence, and may function in binding to RNA. Alternative splicing results in multiple transcript variants. [provided by RefSeq, Apr 2013]
Function	Specifically recognizes and binds N6-methyladenosine (m6A)-containing RNAs. M6A is a modification present at internal sites of mRNAs and some non-coding RNAs and plays a role in the efficiency of mRNA splicing, processing and stability. [UniProt]
Calculated Mw	64 kDa
Cellular Localization	Cytoplasm, cytosol. [UniProt]

## Images



ARG40180 anti-YTHDF3 antibody ICC/IF image

Immunofluorescence: U2OS cells stained with ARG40180 anti-YTHDF3 antibody at 1:100 dilution.



ARG40180 anti-YTHDF3 antibody IHC-P image

Immunohistochemistry: Paraffin-embedded Mouse stomach stained with ARG40180 anti-YTHDF3 antibody at 1:100 dilution.

ARG40180 anti-YTHDF3 antibody WB image

Western blot: 25 ug of HepG2 cell lysate stained with ARG40180 anti-YTHDF3 antibody at 1:1000 dilution.

