

## ARG40171 anti-Natriuretic Peptide Receptor C (NPR C) antibody

Package: 50 µg

Store at: -20°C

### Summary

Product Description	Goat Polyclonal antibody recognizes Natriuretic Peptide Receptor C (NPR C)
Tested Reactivity	Hu
Predict Reactivity	Ms, Rat, Cow, Dog, Pig
Tested Application	IHC-P, WB
Host	Goat
Clonality	Polyclonal
Isotype	IgG
Target Name	Natriuretic Peptide Receptor C (NPR C)
Species	Human
Immunogen	Synthetic peptide around the C-terminus of Human Natriuretic Peptide Receptor C. (C-HRELREDSIRSHFS, NP_000899.1)
Conjugation	Un-conjugated
Alternate Names	GUCY2B; ANPRC; C5orf23; Atrial natriuretic peptide receptor 3; NPR-C; NPRC; Atrial natriuretic peptide receptor type C; Atrial natriuretic peptide clearance receptor; ANPR-C; ANP-C

### Application Instructions

Application table	Application	Dilution
	IHC-P	2 - 10 µg/ml
	WB	1 - 3 µg/ml

**Application Note**

WB: Recommend incubate at RT for 1h.  
IHC-P: Antigen Retrieval: Microwaved or steamed tissue section in Citrate buffer (pH 6.0).  
\* The dilutions indicate recommended starting dilutions and the optimal dilutions or concentrations should be determined by the scientist.

### Properties

Form	Liquid
Purification	Ammonium sulphate precipitation followed by affinity purification with immunogen.
Buffer	Tris saline (pH 7.3), 0.02% Sodium azide and 0.5% BSA.
Preservative	0.02% Sodium azide
Stabilizer	0.5% BSA
Concentration	0.5 mg/ml
Storage instruction	For continuous use, store undiluted antibody at 2-8°C for up to a week. For long-term storage, aliquot and store at -20°C or below. Storage in frost free freezers is not recommended. Avoid repeated

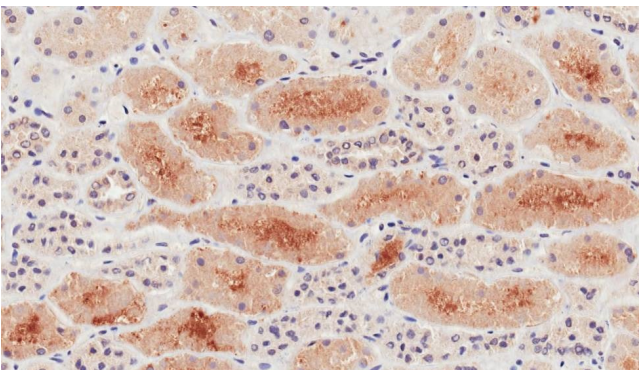
freeze/thaw cycles. Suggest spin the vial prior to opening. The antibody solution should be gently mixed before use.

**Note** For laboratory research only, not for drug, diagnostic or other use.

## Bioinformation

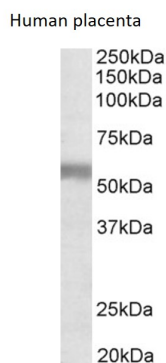
Gene Symbol	NPR3
Gene Full Name	natriuretic peptide receptor 3
Background	This gene encodes one of three natriuretic peptide receptors. Natriuretic peptides are small peptides which regulate blood volume and pressure, pulmonary hypertension, and cardiac function as well as some metabolic and growth processes. The product of this gene encodes a natriuretic peptide receptor responsible for clearing circulating and extracellular natriuretic peptides through endocytosis of the receptor. Multiple transcript variants encoding different isoforms have been found for this gene.[provided by RefSeq, Feb 2011]
Function	Receptor for the natriuretic peptide hormones, binding with similar affinities atrial natriuretic peptide NPPA/ANP, brain natriuretic peptide NPPB/BNP, and C-type natriuretic peptide NPPC/CNP. May function as a clearance receptor for NPPA, NPPB and NPPC, regulating their local concentrations and effects. May regulate diuresis, blood pressure and skeletal development. Does not have guanylate cyclase activity. [UniProt]
Calculated Mw	60 kDa
Cellular Localization	Membrane; Single-pass type I membrane protein. [UniProt]

## Images



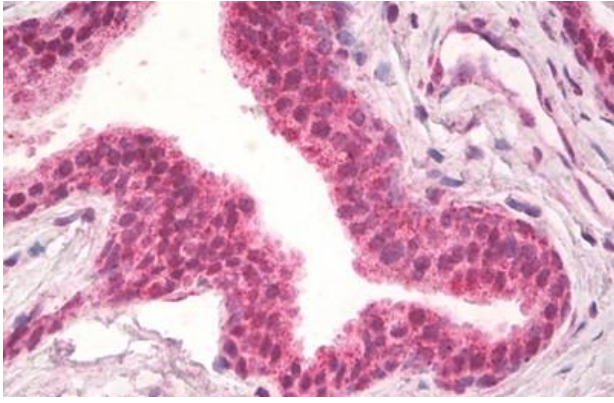
ARG40171 anti-Natriuretic Peptide Receptor C (NPR C) antibody IHC-P image

Immunohistochemistry: Paraffin-embedded Human kidney tissue. Antigen Retrieval: Microwaved tissue section in Citrate buffer (pH 6.0). The tissue section was stained with ARG40171 anti-Natriuretic Peptide Receptor C (NPR C) antibody at 2 µg/ml dilution followed by HRP-staining.



ARG40171 anti-Natriuretic Peptide Receptor C (NPR C) antibody WB image

Western blot: 35 µg of Human placenta lysate (in RIPA buffer) stained with ARG40171 anti-Natriuretic Peptide Receptor C (NPR C) antibody at 1 µg/ml dilution and incubated at RT for 1 hour.



ARG40171 anti-Natriuretic Peptide Receptor C (NPR C) antibody IHC-P image

Immunohistochemistry: Paraffin-embedded Human prostate tissue. Antigen Retrieval: Steam tissue section in Citrate buffer (pH 6.0). The tissue section was stained with ARG40171 anti-Natriuretic Peptide Receptor C (NPR C) antibody at 10  $\mu$ g/ml dilution followed by AP-staining.