

ARG40168 anti-POU4F3 antibody

Package: 50 µg
Store at: -20°C

Summary

Product Description	Goat Polyclonal antibody recognizes POU4F3
Tested Reactivity	Hu, Ms
Predict Reactivity	Dog, Rat
Tested Application	WB
Host	Goat
Clonality	Polyclonal
Isotype	IgG
Target Name	POU4F3
Species	Human
Immunogen	Synthetic peptide around the internal region of Human POU4F3. (C-EAAYREKNSKPE, NP_002691.1)
Conjugation	Un-conjugated
Alternate Names	Brn-3C; BRN3C; Brain-3C; DFNA15; Brain-specific homeobox/POU domain protein 3C; POU domain, class 4, transcription factor 3

Application Instructions

Application table	Application	Dilution
	WB	0.2 - 0.6 µg/ml
Application Note	WB: Recommend incubate at RT for 1h. * The dilutions indicate recommended starting dilutions and the optimal dilutions or concentrations should be determined by the scientist.	
Observed Size	~ 40 kDa	

Properties

Form	Liquid
Purification	Ammonium sulphate precipitation followed by affinity purification with immunogen.
Buffer	Tris saline (pH 7.3), 0.02% Sodium azide and 0.5% BSA.
Preservative	0.02% Sodium azide
Stabilizer	0.5% BSA
Concentration	0.5 mg/ml
Storage instruction	For continuous use, store undiluted antibody at 2-8°C for up to a week. For long-term storage, aliquot and store at -20°C or below. Storage in frost free freezers is not recommended. Avoid repeated freeze/thaw cycles. Suggest spin the vial prior to opening. The antibody solution should be gently mixed before use.

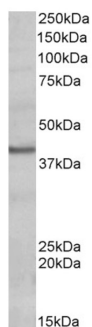
Note For laboratory research only, not for drug, diagnostic or other use.

Bioinformation

Gene Symbol	POU4F3
Gene Full Name	POU class 4 homeobox 3
Background	This gene encodes a member of the POU-domain family of transcription factors. POU-domain proteins have been observed to play important roles in control of cell identity in several systems. This protein is found in the retina and may play a role in determining or maintaining the identities of a small subset of visual system neurons. Defects in this gene are the cause of non-syndromic sensorineural deafness autosomal dominant type 15. [provided by RefSeq, Mar 2009]
Function	May play a role in determining or maintaining the identities of a small subset of visual system neurons. [UniProt]
Calculated Mw	37 kDa
Cellular Localization	Nucleus. Cytoplasm. Note=Preferentially localized in the nucleus. [UniProt]

Images

Human heart



ARG40168 anti-POU4F3 antibody WB image

Western blot: 35 µg of Human heart lysate (in RIPA buffer) stained with ARG40168 anti-POU4F3 antibody at 0.2 µg/ml dilution and incubated at RT for 1 hour.