

ARG40163 anti-EAAT1 antibody

Package: 100 µl
Store at: -20°C

Summary

Product Description	Rabbit Polyclonal antibody recognizes EAAT1
Tested Reactivity	Hu, Ms, Rat
Tested Application	IHC-P, WB
Host	Rabbit
Clonality	Polyclonal
Isotype	IgG
Target Name	EAAT1
Species	Human
Immunogen	Synthetic peptide derived from Human EAAT1.
Conjugation	Un-conjugated
Alternate Names	EAAT1; Sodium-dependent glutamate/aspartate transporter 1; GLAST-1; Excitatory amino acid transporter 1; GLAST1; Solute carrier family 1 member 3; GLAST; EA6

Application Instructions

Application table	Application	Dilution
	IHC-P	1:50 - 1:200
	WB	1:500 - 1:2000
Application Note	IHC-P: Antigen Retrieval: Heat mediation was performed in Tris-EDTA buffer (pH 8.0-8.4) for 20 minutes. * The dilutions indicate recommended starting dilutions and the optimal dilutions or concentrations should be determined by the scientist.	
Positive Control	Mouse brain	

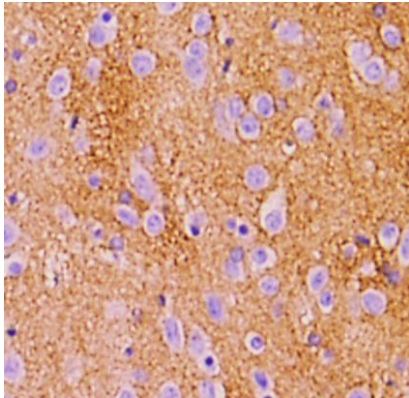
Properties

Form	Liquid
Purification	Affinity purified.
Buffer	PBS (pH 7.4), 0.02% Sodium azide and 50% Glycerol.
Preservative	0.02% Sodium azide
Stabilizer	50% Glycerol
Storage instruction	For continuous use, store undiluted antibody at 2-8°C for up to a week. For long-term storage, aliquot and store at -20°C. Storage in frost free freezers is not recommended. Avoid repeated freeze/thaw cycles. Suggest spin the vial prior to opening. The antibody solution should be gently mixed before use.
Note	For laboratory research only, not for drug, diagnostic or other use.

Bioinformation

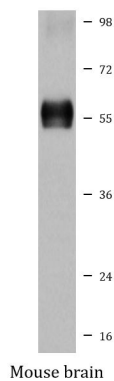
Gene Symbol	SLC1A3
Gene Full Name	solute carrier family 1 (glial high affinity glutamate transporter), member 3
Background	This gene encodes a member of a member of a high affinity glutamate transporter family. This gene functions in the termination of excitatory neurotransmission in central nervous system. Mutations are associated with episodic ataxia, Type 6. Alternative splicing results in multiple transcript variants.[provided by RefSeq, Feb 2014]
Function	Transports L-glutamate and also L- and D-aspartate. Essential for terminating the postsynaptic action of glutamate by rapidly removing released glutamate from the synaptic cleft. Acts as a symport by cotransporting sodium. [UniProt]
Calculated Mw	60 kDa
PTM	Glycosylated. [UniProt]
Cellular Localization	Cell membrane; Multi-pass membrane protein. [UniProt]

Images



ARG40163 anti-EAAT1 antibody IHC-P image

Immunohistochemistry: Paraffin-embedded Rat brain tissue. Antigen Retrieval: Heat mediation was performed in Tris-EDTA buffer (pH 8.0-8.4) for 20 minutes. The tissues were blocked in 5% BSA for 30 minutes at room temperature, washed with ddH₂O and PBS, and then stained with ARG40163 anti-EAAT1 antibody at 1:50 dilution, for 1 hour at room temperature.



ARG40163 anti-EAAT1 antibody WB image

Western blot: Mouse brain lysate stained with ARG40163 anti-EAAT1 antibody.