

ARG40158 anti-KREMEN1 antibody

Package: 50 µg
Store at: -20°C

Summary

Product Description	Rabbit Polyclonal antibody recognizes KREMEN1
Tested Reactivity	Hu, Rat
Tested Application	IHC-P, WB
Specificity	Three isoforms of KREMEN1 exists as a result of alternative splicing event.
Host	Rabbit
Clonality	Polyclonal
Isotype	IgG
Target Name	KREMEN1
Species	Human
Immunogen	A 18 amino acid peptide within the last 50 amino acids of Human KREMEN1.
Conjugation	Un-conjugated
Alternate Names	KREMEN; KRM1; Dickkopf receptor; Kringle domain-containing transmembrane protein 1; Kremen protein 1; Kringle-containing protein marking the eye and the nose

Application Instructions

Application table	Application	Dilution
	IHC-P	5 - 20 µg/ml
	WB	0.125 - 0.25 µg/ml
Application Note	* The dilutions indicate recommended starting dilutions and the optimal dilutions or concentrations should be determined by the scientist.	

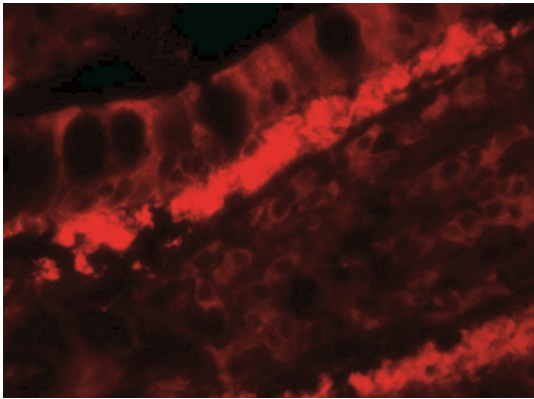
Properties

Form	Liquid
Purification	Affinity purification with immunogen.
Buffer	PBS and 0.02% Sodium azide.
Preservative	0.02% Sodium azide
Concentration	1 mg/ml
Storage instruction	For continuous use, store undiluted antibody at 2-8°C for up to a week. For long-term storage, aliquot and store at -20°C or below. Storage in frost free freezers is not recommended. Avoid repeated freeze/thaw cycles. Suggest spin the vial prior to opening. The antibody solution should be gently mixed before use.
Note	For laboratory research only, not for drug, diagnostic or other use.

Bioinformation

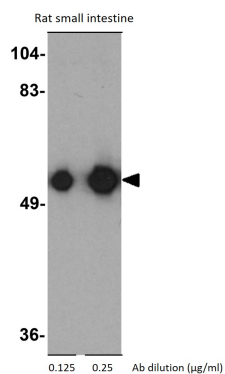
Gene Symbol	KREMEN1
Gene Full Name	kringle containing transmembrane protein 1
Background	This gene encodes a high-affinity dickkopf homolog 1 (DKK1) transmembrane receptor that functionally cooperates with DKK1 to block wingless (WNT)/beta-catenin signaling. The encoded protein is a component of a membrane complex that modulates canonical WNT signaling through lipoprotein receptor-related protein 6 (LRP6). It contains extracellular kringle, WSC, and CUB domains. Alternatively spliced transcript variants encoding distinct isoforms have been observed for this gene. [provided by RefSeq, Jul 2008]
Function	Receptor for Dickkopf protein. Cooperates with Dickkopf to block Wnt/beta-catenin signaling (By similarity). [UniProt]
Calculated Mw	52 kDa
Cellular Localization	Cell membrane; Single-pass type I membrane protein. [UniProt]

Images



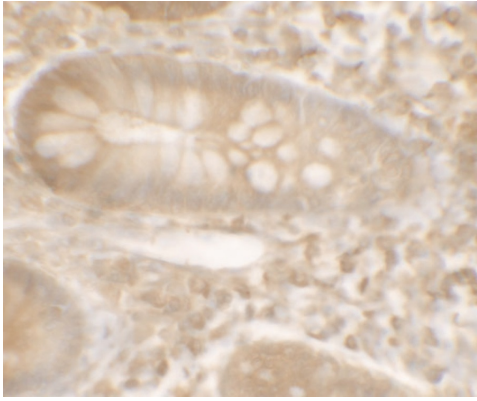
ARG40158 anti-KREMEN1 antibody IHC-P image

Immunohistochemistry: Paraffin-embedded Human small intestine stained with ARG40158 anti-KREMEN1 antibody at 20 $\mu\text{g}/\text{ml}$ dilution.



ARG40158 anti-KREMEN1 antibody WB image

Western blot: Rat small intestine lysate stained with ARG40158 anti-KREMEN1 antibody at 0.125 $\mu\text{g}/\text{ml}$ (left) and 0.25 $\mu\text{g}/\text{ml}$ (right) dilution.



ARG40158 anti-KREMEN1 antibody IHC-P image

Immunohistochemistry: Paraffin-embedded Human small intestine stained with ARG40158 anti-KREMEN1 antibody at 5 µg/ml dilution.