

ARG40155 anti-C1GALT1C1 / COSMC antibody

Package: 50 µl
Store at: -20°C

Summary

Product Description	Rabbit Polyclonal antibody recognizes C1GALT1C1 / COSMC
Tested Reactivity	Rat
Predict Reactivity	Hu, Ms, Cow, Dog, Gpig, Hrs, Rb
Tested Application	WB
Host	Rabbit
Clonality	Polyclonal
Isotype	IgG
Target Name	C1GALT1C1 / COSMC
Species	Rat
Immunogen	Synthetic peptide around the N-terminal region of Rat C1GALT1C1 / COSMC. (within the following region: SFQVYCVLVKPKDVSLWAAVKETWTKHCDKAEFFSSENVKVFESINMDT)
Conjugation	Un-conjugated
Alternate Names	TNPS; C1GalT2; Core 1 beta3-galactosyltransferase-specific molecular chaperone; COSMC; C1GALT2; HSPC067; Core 1 beta3-Gal-T2; Core 1 beta1,3-galactosyltransferase 2; MST143; C1GALT1-specific chaperone 1; C1Gal-T2; C38H2-L1; C38H2-like protein 1

Application Instructions

Predict Reactivity Note	Predicted Homology Based On Immunogen Sequence: Cow: 100%; Dog: 100%; Guinea Pig: 93%; Horse: 100%; Human: 100%; Mouse: 100%; Rabbit: 100%				
Application table	<table border="1"> <thead> <tr> <th>Application</th> <th>Dilution</th> </tr> </thead> <tbody> <tr> <td>WB</td> <td>1 µg/ml</td> </tr> </tbody> </table>	Application	Dilution	WB	1 µg/ml
Application	Dilution				
WB	1 µg/ml				
Application Note	* The dilutions indicate recommended starting dilutions and the optimal dilutions or concentrations should be determined by the scientist.				

Properties

Form	Liquid
Purification	Affinity purified.
Buffer	PBS, 0.09% (w/v) Sodium azide and 2% Sucrose.
Preservative	0.09% (w/v) Sodium azide
Stabilizer	2% Sucrose
Concentration	Batch dependent: 0.5 - 1 mg/ml
Storage instruction	For continuous use, store undiluted antibody at 2-8°C for up to a week. For long-term storage, aliquot and store at -20°C or below. Storage in frost free freezers is not recommended. Avoid repeated

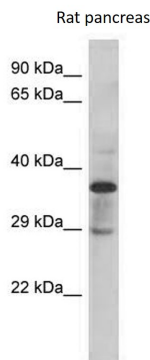
freeze/thaw cycles. Suggest spin the vial prior to opening. The antibody solution should be gently mixed before use.

Note For laboratory research only, not for drug, diagnostic or other use.

Bioinformation

Gene Symbol	C1GALT1C1
Gene Full Name	C1GALT1-specific chaperone 1
Background	This gene encodes a type II transmembrane protein that is similar to the core 1 beta1,3-galactosyltransferase 1, which catalyzes the synthesis of the core-1 structure, also known as Thomsen-Friedenreich antigen, on O-linked glycans. This gene product lacks the galactosyltransferase activity itself, but instead acts as a molecular chaperone required for the folding, stability and full activity of the core 1 beta1,3-galactosyltransferase 1. Mutations in this gene have been associated with Tn syndrome. Alternatively spliced transcript variants encoding the same protein have been identified. [provided by RefSeq, Dec 2009]
Function	Probable chaperone required for the generation of 1 O-glycan Gal-beta1-3GalNAc-alpha1-Ser/Thr (T antigen), which is a precursor for many extended O-glycans in glycoproteins. Probably acts as a specific molecular chaperone assisting the folding/stability of core 1 beta-3-galactosyltransferase (C1GALT1). [UniProt]
Calculated Mw	36 kDa
Cellular Localization	Membrane; Single-pass type II membrane protein. [UniProt]

Images



ARG40155 anti-C1GALT1C1 / COSMC antibody WB image

Western blot: Rat pancreas lysate stained with ARG40155 anti-C1GALT1C1 / COSMC antibody at 1 µg/ml dilution.