

## ARG40150 anti-REXO4 / PMC2 antibody

Package: 50 µl  
Store at: -20°C

### Summary

Product Description	Rabbit Polyclonal antibody recognizes REXO4 / PMC2
Tested Reactivity	Hu
Tested Application	WB
Host	Rabbit
Clonality	Polyclonal
Isotype	IgG
Target Name	REXO4 / PMC2
Species	Human
Immunogen	Synthetic peptide around the middle region of Human REXO4 / PMC2. (within the following region: PADIEAAIGPEAAKIARKQLGQSEGSVLSLSLVKEQAFGGLTRALALDCEM)
Conjugation	Un-conjugated
Alternate Names	RNA exonuclease 4; hPMC2; Prevents mitotic catastrophe 2 protein homolog; XPMC2H; Exonuclease XPMC2; EC 3.1.-.-; REX4; XPMC2

### Application Instructions

Application table	Application	Dilution
	WB	0.2 - 1 µg/ml
Application Note	* The dilutions indicate recommended starting dilutions and the optimal dilutions or concentrations should be determined by the scientist.	
Positive Control	Human lung	

### Properties

Form	Liquid
Purification	Affinity purified.
Buffer	PBS, 0.09% (w/v) Sodium azide and 2% Sucrose.
Preservative	0.09% (w/v) Sodium azide
Stabilizer	2% Sucrose
Concentration	Batch dependent: 0.5 - 1 mg/ml
Storage instruction	For continuous use, store undiluted antibody at 2-8°C for up to a week. For long-term storage, aliquot and store at -20°C or below. Storage in frost free freezers is not recommended. Avoid repeated freeze/thaw cycles. Suggest spin the vial prior to opening. The antibody solution should be gently mixed before use.
Note	For laboratory research only, not for drug, diagnostic or other use.

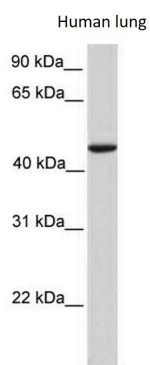
## Bioinformation

---

Gene Symbol	REXO4
Gene Full Name	REX4 homolog, 3'-5' exonuclease
Calculated Mw	47 kDa
Cellular Localization	Nucleus, nucleolus. [UniProt]

## Images

---



ARG40150 anti-REXO4 / PMC2 antibody WB image

Western blot: Human lung lysate stained with ARG40150 anti-REXO4 / PMC2 antibody at 0.2 - 1  $\mu$ g/ml dilution.