

ARG40144 anti-OVGP1 antibody

Package: 100 µl
Store at: -20°C

Summary

Product Description	Rabbit Polyclonal antibody recognizes OVGP1
Tested Reactivity	Hu
Tested Application	FACS, IHC-P, WB
Host	Rabbit
Clonality	Polyclonal
Isotype	IgG
Target Name	OVGP1
Species	Human
Immunogen	KLH-conjugated synthetic peptide between aa. 107-137 of Human OVGP1.
Conjugation	Un-conjugated
Alternate Names	MUC9; Mucin-9; Oviductal glycoprotein; Estrogen-dependent oviduct protein; EGP; OGP; CHIT5; Oviductin; Oviduct-specific glycoprotein

Application Instructions

Application table	Application	Dilution
	FACS	1:25
	IHC-P	1:25
	WB	1:2000
Application Note	IHC-P: Antigen Retrieval: Heat mediation was performed in Citrate buffer (pH 6.0). * The dilutions indicate recommended starting dilutions and the optimal dilutions or concentrations should be determined by the scientist.	
Positive Control	Human placenta	

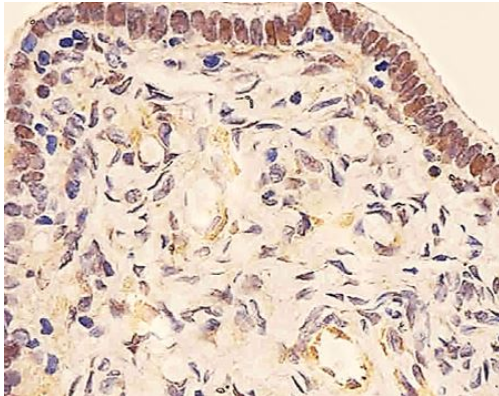
Properties

Form	Liquid
Purification	Purification with Protein A and immunogen peptide.
Buffer	PBS and 0.09% (W/V) Sodium azide.
Preservative	0.09% (W/V) Sodium azide.
Storage instruction	For continuous use, store undiluted antibody at 2-8°C for up to a week. For long-term storage, aliquot and store at -20°C or below. Storage in frost free freezers is not recommended. Avoid repeated freeze/thaw cycles. Suggest spin the vial prior to opening. The antibody solution should be gently mixed before use.
Note	For laboratory research only, not for drug, diagnostic or other use.

Bioinformation

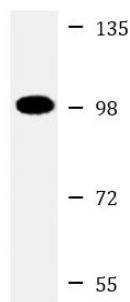
Gene Symbol	OVGP1
Gene Full Name	oviductal glycoprotein 1, 120kDa
Background	This gene encodes a large, carbohydrate-rich, epithelial glycoprotein with numerous O-glycosylation sites located within threonine, serine, and proline-rich tandem repeats. The gene is similar to members of the mucin and the glycosyl hydrolase 18 gene families. Regulation of expression may be estrogen-dependent. Gene expression and protein secretion occur during late follicular development through early cleavage-stage embryonic development. The protein is secreted from non-ciliated oviductal epithelial cells and associates with ovulated oocytes, blastomeres, and spermatozoan acrosomal regions. [provided by RefSeq, Jul 2008]
Function	Binds to oocyte zona pellucida in vivo. May play a role in the fertilization process and/or early embryonic development. [UniProt]
Calculated Mw	75 kDa
Cellular Localization	Cytoplasmic vesicle, secretory vesicle. Note=Secretory granules. [UniProt]

Images



ARG40144 anti-OVGP1 antibody IHC-P image

Immunohistochemistry: Paraformaldehyde-fixed and paraffin-embedded Human fallopian tube was blocked with 3% BSA for 0.5 hour at RT. Antigen Retrieval: Heat mediation was performed in Citrate buffer (pH 6.0). Samples were stained with ARG40144 anti-OVGP1 antibody at 1:25 for 1 hour at 37°C.

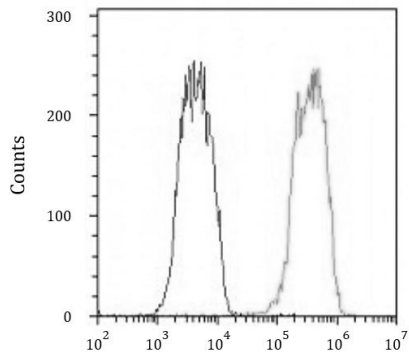


Human placenta

ARG40144 anti-OVGP1 antibody WB image

Western blot: 20 µg of Human placenta lysate stained with ARG40144 anti-OVGP1 antibody at 1:2000 dilution.

ARG40144 anti-OVGP1 antibody FACS image



Flow Cytometry: HeLa cells were fixed with 2% paraformaldehyde (10 min) and then permeabilized with 90% methanol for 10 min. The cells were then incubated in 2% BSA to block non-specific protein-protein interactions followed by ARG40144 anti-OVGP1 antibody (right histogram) at 1:25 dilution for 60 min at 37°C, followed by DyLight®488 labelled secondary antibody. Isotype control antibody (left histogram) was Rabbit IgG1 (1 μ g/ 10^6 cells) used under the same conditions. Acquisition of > 10000 events was performed.