

## ARG40134 anti-CHRAC17 antibody

Package: 100 µl  
Store at: -20°C

### Summary

Product Description	Rabbit Polyclonal antibody recognizes CHRAC17
Tested Reactivity	Hu
Predict Reactivity	Ms, Rat, Bov
Tested Application	FACS, WB
Host	Rabbit
Clonality	Polyclonal
Isotype	IgG
Target Name	CHRAC17
Species	Human
Immunogen	KLH-conjugated synthetic peptide corresponding to aa. 5-34 of Human CHRAC17.
Conjugation	Un-conjugated
Alternate Names	DNA polymerase II subunit 3; CHRAC-17; HuCHRAC17; Chromatin accessibility complex 17 kDa protein; YBL1; AsTP; DNA polymerase epsilon subunit p17; Arsenic-transactivated protein; p17; CHARAC17; CHRAC17; EC 2.7.7.7; DNA polymerase epsilon subunit 3

### Application Instructions

Application table	Application	Dilution
	FACS	1:10 - 1:50
	WB	1:1000
Application Note	* The dilutions indicate recommended starting dilutions and the optimal dilutions or concentrations should be determined by the scientist.	
Positive Control	K562	

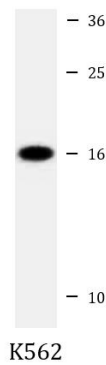
### Properties

Form	Liquid
Purification	Saturated Ammonium Sulfate (SAS) precipitation followed by dialysis against PBS.
Buffer	PBS and 0.09% (W/V) Sodium azide.
Preservative	0.09% (W/V) Sodium azide.
Storage instruction	For continuous use, store undiluted antibody at 2-8°C for up to a week. For long-term storage, aliquot and store at -20°C or below. Storage in frost free freezers is not recommended. Avoid repeated freeze/thaw cycles. Suggest spin the vial prior to opening. The antibody solution should be gently mixed before use.
Note	For laboratory research only, not for drug, diagnostic or other use.

## Bioinformation

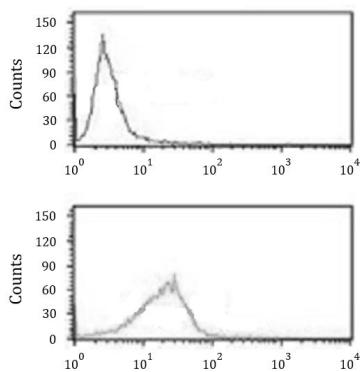
Gene Symbol	POLE3
Gene Full Name	polymerase (DNA directed), epsilon 3, accessory subunit
Background	POLE3 is a histone-fold protein that interacts with other histone-fold proteins to bind DNA in a sequence-independent manner. These histone-fold protein dimers combine within larger enzymatic complexes for DNA transcription, replication, and packaging.[supplied by OMIM, Apr 2004]
Function	Forms a complex with DNA polymerase epsilon subunit CHRAC1 and binds naked DNA, which is then incorporated into chromatin, aided by the nucleosome-remodeling activity of ISWI/SNF2H and ACF1. [UniProt]
Calculated Mw	17 kDa
Cellular Localization	Nucleus. [UniProt]

## Images



ARG40134 anti-CHRAC17 antibody WB image

Western blot: 35 µg of K562 cell lysate stained with ARG40134 anti-CHRAC17 antibody.



ARG40134 anti-CHRAC17 antibody FACS image

Flow Cytometry: K562 cells stained with ARG40134 anti-CHRAC17 antibody (bottom histogram) or without primary antibody as control (top histogram), followed by incubation with FITC labelled secondary antibody.