

## ARG40130 anti-DPP8 antibody

Package: 100 µl  
Store at: -20°C

### Summary

Product Description	Rabbit Polyclonal antibody recognizes DPP8
Tested Reactivity	Hu
Predict Reactivity	Ms
Tested Application	FACS, IHC-P, WB
Host	Rabbit
Clonality	Polyclonal
Isotype	IgG
Target Name	DPP8
Species	Human
Immunogen	KLH-conjugated synthetic peptide corresponding to aa. 846-876 of Human DPP8.
Conjugation	Un-conjugated
Alternate Names	MSTP135; Prolyl dipeptidase DPP8; MST097; EC 3.4.14.5; DP8; DPRP1; MSTP097; Dipeptidyl peptidase 8; DPRP-1; Dipeptidyl peptidase IV-related protein 1; Dipeptidyl peptidase VIII; MSTP141; DPP VIII

### Application Instructions

Application table	Application	Dilution
	FACS	1:10 - 1:50
	IHC-P	1:50 - 1:100
	WB	1:1000
Application Note	* The dilutions indicate recommended starting dilutions and the optimal dilutions or concentrations should be determined by the scientist.	
Positive Control	293	

### Properties

Form	Liquid
Purification	Saturated Ammonium Sulfate (SAS) precipitation followed by dialysis against PBS.
Buffer	PBS and 0.09% (W/V) Sodium azide.
Preservative	0.09% (W/V) Sodium azide.
Storage instruction	For continuous use, store undiluted antibody at 2-8°C for up to a week. For long-term storage, aliquot and store at -20°C or below. Storage in frost free freezers is not recommended. Avoid repeated freeze/thaw cycles. Suggest spin the vial prior to opening. The antibody solution should be gently mixed before use.

Note

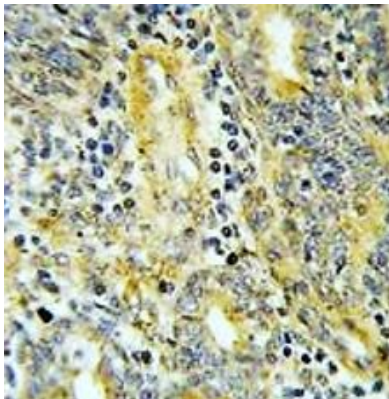
For laboratory research only, not for drug, diagnostic or other use.

## Bioinformation

---

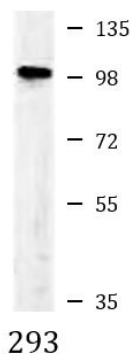
Gene Symbol	DPP8
Gene Full Name	dipeptidyl-peptidase 8
Background	This gene encodes a member of the peptidase S9B family, a small family of dipeptidyl peptidases that are able to cleave peptide substrates at a prolyl bond. The encoded protein shares similarity with dipeptidyl peptidase IV in that it is ubiquitously expressed, and hydrolyzes the same substrates. These similarities suggest that, like dipeptidyl peptidase IV, this protein may play a role in T-cell activation and immune function. Alternatively spliced transcript variants encoding different isoforms have been described. [provided by RefSeq, Jul 2008]
Function	Dipeptidyl peptidase that cleaves off N-terminal dipeptides from proteins having a Pro or Ala residue at position 2. May play a role in T-cell activation and immune function. [UniProt]
Calculated Mw	103 kDa
Cellular Localization	Cytoplasm. [UniProt]

## Images



ARG40130 anti-DPP8 antibody IHC-P image

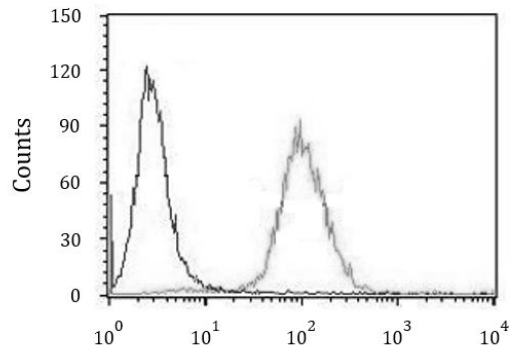
Immunohistochemistry: Formalin-fixed and paraffin-embedded Human prostate carcinoma stained with ARG40130 anti-DPP8 antibody.



ARG40130 anti-DPP8 antibody WB image

Western blot: 35 µg of 293 cell lysate stained with ARG40130 anti-DPP8 antibody.

### ARG40130 anti-DPP8 antibody FACS image



Flow Cytometry: 293 cells stained with ARG40130 anti-DPP8 antibody (right histogram) or without primary antibody as control (left histogram), followed by incubation with FITC labelled secondary antibody.