

## ARG40128 anti-YY1AP1 antibody

Package: 100 µl  
Store at: -20°C

### Summary

Product Description	Rabbit Polyclonal antibody recognizes YY1AP1
Tested Reactivity	Hu
Tested Application	WB
Host	Rabbit
Clonality	Polyclonal
Isotype	IgG
Target Name	YY1AP1
Species	Human
Immunogen	KLH-conjugated synthetic peptide corresponding to aa. 437-468 of Human YY1AP1.
Conjugation	Un-conjugated
Alternate Names	YY1AP; Hepatocellular carcinoma susceptibility protein; YAP; HCCA1; HCCA2; Hepatocellular carcinoma-associated protein 2; YY1-associated protein 1

### Application Instructions

Application table	Application	Dilution
	WB	1:1000 - 1:2000
Application Note	* The dilutions indicate recommended starting dilutions and the optimal dilutions or concentrations should be determined by the scientist.	
Positive Control	Human skeletal muscle	

### Properties

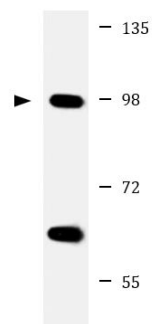
Form	Liquid
Purification	Purification with Protein A and immunogen peptide.
Buffer	PBS and 0.09% (W/V) Sodium azide.
Preservative	0.09% (W/V) Sodium azide.
Storage instruction	For continuous use, store undiluted antibody at 2-8°C for up to a week. For long-term storage, aliquot and store at -20°C or below. Storage in frost free freezers is not recommended. Avoid repeated freeze/thaw cycles. Suggest spin the vial prior to opening. The antibody solution should be gently mixed before use.
Note	For laboratory research only, not for drug, diagnostic or other use.

### Bioinformation

Gene Symbol	YY1AP1
Gene Full Name	YY1 associated protein 1
Background	The encoded gene product presumably interacts with YY1 protein; however, its exact function is not known. Alternative splicing results in multiple transcript variants encoding different isoforms. [provided by RefSeq, Jul 2008]
Function	Enhances transcription activation by YY1. May play a role in cell cycle regulation. [UniProt]
Calculated Mw	88 kDa
Cellular Localization	Cytoplasm. Nucleus. Nucleus, nucleoplasm. Nucleus, nucleolus. [UniProt]

## Images

---



Human skeletal muscle

### ARG40128 anti-YY1AP1 antibody WB image

Western blot: 20 µg of Human skeletal muscle lysate stained with ARG40128 anti-YY1AP1 antibody at 1:2000 dilution.