

## ARG40111 anti-PHF11 antibody

Package: 100 µl  
Store at: -20°C

### Summary

Product Description	Rabbit Polyclonal antibody recognizes PHF11
Tested Reactivity	Hu, Ms, Rat
Tested Application	ICC/IF, IHC-P, WB
Host	Rabbit
Clonality	Polyclonal
Isotype	IgG
Target Name	PHF11
Species	Human
Immunogen	Recombinant fusion protein corresponding to aa. 1-292 of Human PHF11 (NP_001035533.1).
Conjugation	Un-conjugated
Alternate Names	NY-REN-34; APY; IGHF; IGER; Renal carcinoma antigen NY-REN-34; NYREN34; PHD finger protein 11; IGLF; BCAP; BRCA1 C-terminus-associated protein

### Application Instructions

Application table	Application	Dilution
	ICC/IF	1:50 - 1:200
	IHC-P	1:50 - 1:200
	WB	1:500 - 1:2000
Application Note	* The dilutions indicate recommended starting dilutions and the optimal dilutions or concentrations should be determined by the scientist.	
Positive Control	SW480	
Observed Size	36 kDa	

### Properties

Form	Liquid
Purification	Affinity purified.
Buffer	PBS (pH 7.3), 0.02% Sodium azide and 50% Glycerol.
Preservative	0.02% Sodium azide
Stabilizer	50% Glycerol
Storage instruction	For continuous use, store undiluted antibody at 2-8°C for up to a week. For long-term storage, aliquot and store at -20°C. Storage in frost free freezers is not recommended. Avoid repeated freeze/thaw cycles. Suggest spin the vial prior to opening. The antibody solution should be gently mixed before use.

Note

For laboratory research only, not for drug, diagnostic or other use.

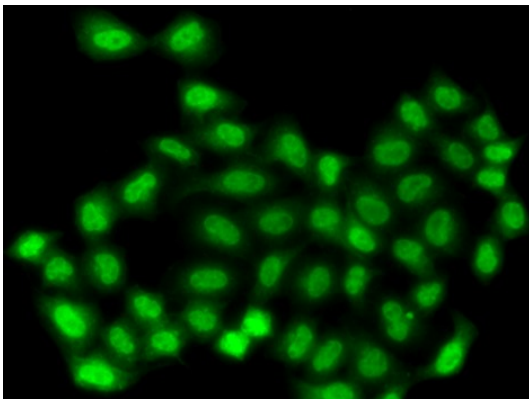
## Bioinformation

---

Gene Symbol	PHF11
Gene Full Name	PHD finger protein 11
Function	Positive regulator of Th1-type cytokine gene expression. [UniProt]
Calculated Mw	38 kDa
Cellular Localization	Nucleus. [UniProt]

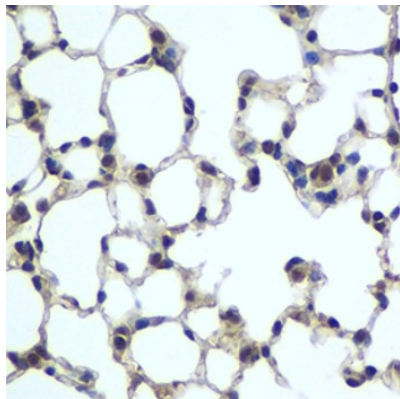
---

## Images



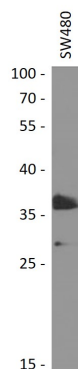
ARG40111 anti-PHF11 antibody ICC/IF image

Immunofluorescence: A549 cells stained with ARG40111 anti-PHF11 antibody.



ARG40111 anti-PHF11 antibody IHC-P image

Immunohistochemistry: Paraffin-embedded Mouse lung stained with ARG40111 anti-PHF11 antibody at 1:100 dilution.



ARG40111 anti-PHF11 antibody WB image

Western blot: 25 µg of SW480 cell lysate stained with ARG40111 anti-PHF11 antibody at 1:1000 dilution.