

ARG40109
anti-STC1 / Stanniocalcin 1 antibodyPackage: 100 µl
Store at: -20°C

Summary

| | |
|---------------------|--|
| Product Description | Rabbit Polyclonal antibody recognizes STC1 / Stanniocalcin 1 |
| Tested Reactivity | Ms, Rat |
| Tested Application | WB |
| Host | Rabbit |
| Clonality | Polyclonal |
| Isotype | IgG |
| Target Name | STC1 / Stanniocalcin 1 |
| Species | Human |
| Immunogen | Recombinant protein of Human STC1. |
| Conjugation | Un-conjugated |
| Alternate Names | Stanniocalcin-1; STC-1; STC |

Application Instructions

| | | |
|-------------------|--|-----------------|
| Application table | Application | Dilution |
| | WB | 1:1000 - 1:2000 |
| Application Note | * The dilutions indicate recommended starting dilutions and the optimal dilutions or concentrations should be determined by the scientist. | |
| Positive Control | Rat kidney and Mouse kidney | |
| Observed Size | ~ 28 kDa | |

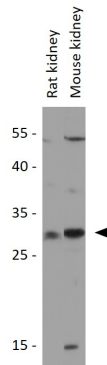
Properties

| | |
|---------------------|---|
| Form | Liquid |
| Purification | Affinity purified. |
| Buffer | PBS (pH 7.3), 0.02% Sodium azide and 50% Glycerol. |
| Preservative | 0.02% Sodium azide |
| Stabilizer | 50% Glycerol |
| Storage instruction | For continuous use, store undiluted antibody at 2-8°C for up to a week. For long-term storage, aliquot and store at -20°C. Storage in frost free freezers is not recommended. Avoid repeated freeze/thaw cycles. Suggest spin the vial prior to opening. The antibody solution should be gently mixed before use. |
| Note | For laboratory research only, not for drug, diagnostic or other use. |

Bioinformation

| | |
|-----------------------|---|
| Gene Symbol | STC1 |
| Gene Full Name | stanniocalcin 1 |
| Background | This gene encodes a secreted, homodimeric glycoprotein that is expressed in a wide variety of tissues and may have autocrine or paracrine functions. The gene contains a 5' UTR rich in CAG trinucleotide repeats. The encoded protein contains 11 conserved cysteine residues and is phosphorylated by protein kinase C exclusively on its serine residues. The protein may play a role in the regulation of renal and intestinal calcium and phosphate transport, cell metabolism, or cellular calcium/phosphate homeostasis. Overexpression of human stanniocalcin 1 in mice produces high serum phosphate levels, dwarfism, and increased metabolic rate. This gene has altered expression in hepatocellular, ovarian, and breast cancers. [provided by RefSeq, Jul 2008] |
| Function | Stimulates renal phosphate reabsorption, and could therefore prevent hypercalcemia. [UniProt] |
| Calculated Mw | 28 kDa |
| Cellular Localization | Secreted. [UniProt] |

Images



ARG40109 anti-STC1 / Stanniocalcin 1 antibody WB image

Western blot: 25 µg of Rat kidney and Mouse kidney lysates stained with ARG40109 anti-STC1 / Stanniocalcin 1 antibody at 1:1000 dilution.