

ARG40049 anti-THOC7 antibody

Package: 100 µl
Store at: -20°C

Summary

| | |
|---------------------|--|
| Product Description | Rabbit Polyclonal antibody recognizes THOC7 |
| Tested Reactivity | Hu, Ms, Rat |
| Tested Application | WB |
| Host | Rabbit |
| Clonality | Polyclonal |
| Isotype | IgG |
| Target Name | THOC7 |
| Species | Human |
| Immunogen | Recombinant fusion protein corresponding to aa. 1-204 of Human THOC7 (NP_079351.2). |
| Conjugation | Un-conjugated |
| Alternate Names | fSAP24; THO complex subunit 7 homolog; NIF3L1-binding protein 1; hTRESX30; Functional spliceosome-associated protein 24; Ngg1-interacting factor 3-like protein 1-binding protein 1; NIF3L1BP1 |

Application Instructions

| Application table | Application | Dilution |
|-------------------|--|----------------|
| | WB | 1:500 - 1:2000 |
| Application Note | * The dilutions indicate recommended starting dilutions and the optimal dilutions or concentrations should be determined by the scientist. | |
| Positive Control | Rat brain, Mouse kidney and Jurkat | |
| Observed Size | 24 kDa | |

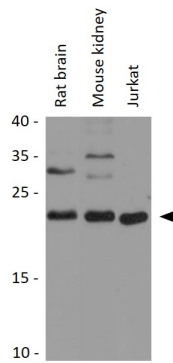
Properties

| | |
|---------------------|---|
| Form | Liquid |
| Purification | Affinity purified. |
| Buffer | PBS (pH 7.3), 0.02% Sodium azide and 50% Glycerol. |
| Preservative | 0.02% Sodium azide |
| Stabilizer | 50% Glycerol |
| Storage instruction | For continuous use, store undiluted antibody at 2-8°C for up to a week. For long-term storage, aliquot and store at -20°C. Storage in frost free freezers is not recommended. Avoid repeated freeze/thaw cycles. Suggest spin the vial prior to opening. The antibody solution should be gently mixed before use. |
| Note | For laboratory research only, not for drug, diagnostic or other use. |

Bioinformation

| | |
|-----------------------|---|
| Gene Symbol | THOC7 |
| Gene Full Name | THO complex 7 |
| Function | <p>Required for efficient export of polyadenylated RNA. Acts as component of the THO subcomplex of the TREX complex which is thought to couple mRNA transcription, processing and nuclear export, and which specifically associates with spliced mRNA and not with unspliced pre-mRNA. TREX is recruited to spliced mRNAs by a transcription-independent mechanism, binds to mRNA upstream of the exon-junction complex (EJC) and is recruited in a splicing- and cap-dependent manner to a region near the 5' end of the mRNA where it functions in mRNA export to the cytoplasm via the TAP/NFX1 pathway.</p> <p>The TREX complex is essential for the export of Kaposi's sarcoma-associated herpesvirus (KSHV) intronless mRNAs and infectious virus production. [UniProt]</p> |
| Calculated Mw | 24 kDa |
| Cellular Localization | Cytoplasm. Nucleus. Nucleus speckle. Note=Interaction with THOC5 is required for nuclear localization. [UniProt] |

Images



ARG40049 anti-THOC7 antibody WB image

Western blot: 25 µg of Rat brain, Mouse kidney and Jurkat cell lysates stained with ARG40049 anti-THOC7 antibody at 1:3000 dilution.